

# REPAIR



# Dellen REPARATUR SET

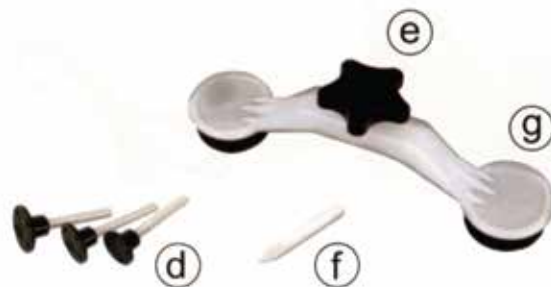
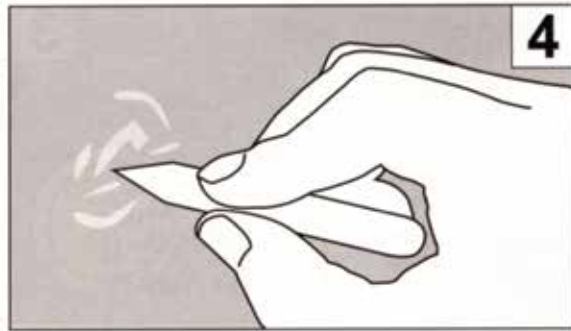
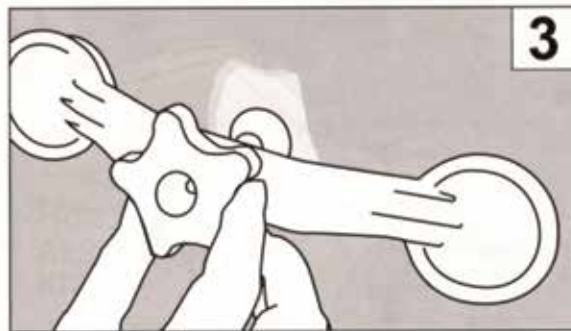
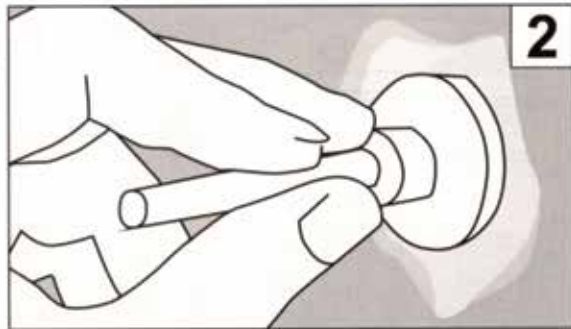
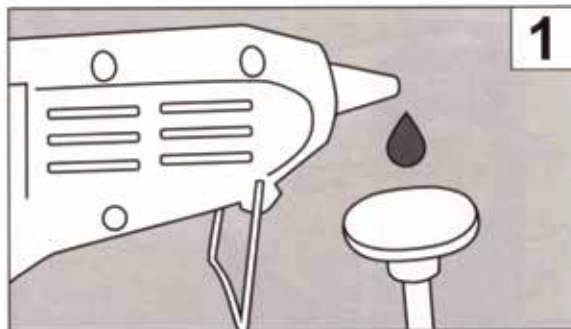
*All-Inclusive-Kit*

Manual

- DE QUIXX DELLEN REPARATUR-SET
- EN QUIXX DENT REPAIR KIT
- FR KIT DE DÉBOSSÉLAGE QUIXX
- IT KIT DI RIPARAZIONE AMMACCATURE QUIXX
- ES KIT DE REPARACIÓN DE ABOLLADURAS QUIXX
- PT KIT DE REPARAÇÃO DE AMOLGDELAS QUIXX
- NL QUIXX DEUKENREPARATIESET
- SE QUIXX REPARATIONSSATS FÖR BUCKLOR
- NO QUIXX BULKREPARASJONSSETT
- DK QUIXX BULEREPARATIONSSÆT
- FI QUIXX LOMMOJEN KORJAUSSARJA
- CZ SADA PRO OPRÁVY MALÝCH DEFORMACÍ KAROSERIE QUIXX
- SK QUIXX OPRÁVNÁ SÚPRAVA NA PRIEHLBINY
- RO QUIXX SET REPARAȚIE ADÂNCITURI
- HU QUIXX HORPADÁSJAVÍTÓ KÉSZLET
- PL ZESTAW NAPRAWCZY DO USUWANIA WGNIECIEŃ QUIXX
- HR QUIXX KOMPLET ZA IZVLAČENJE LIMA
- SR QUIXX KOMPLET ZA IZVLAČENJE LIMA
- SL QUIXX KOMPLET ZA ODPRAVLJANJE UDRTIN
- RU РЕМОНТНЫЙ КОМПЛЕКТ QUIXX DELLEN



Repair



**Instructions for use:**

Before use see the QUIXX Dent Repair Kit video at [www.quixx.com](http://www.quixx.com)

**A) HAZARD WARNING:**

**IMPORTANT:** Please read all instructions carefully before starting repairs and make sure that you have understood everything. Improper use could result in electric shock, fire or injury. **PLEASE KEEP THESE INSTRUCTIONS FOR FUTURE REFERENCE!**

**HOT SURFACES. RISK OF BURNS!** The hot glue gun nozzle (a) and the glue (c) may reach temperatures of between 150 and 200°C. Avoid any contact with the skin.

In case of burns, wash the wound immediately under cold water. Do not first try to remove the glue from the skin. Consult a doctor if necessary.

Children may only use the hot glue gun in the presence of an adult.

Children must not play with the device. Cleaning and maintenance must not be carried out by children unless supervised by an adult. Store the glue gun out of reach of children. The hot glue gun may be used by children 8 years of age and older and by persons with reduced physical, sensory or mental abilities or lack of experience or knowledge if they are supervised by a person responsible for their safety who has been instructed in the safe use of the device and who has understood the associated hazards.

The hot glue gun must not be used in a humid environment or in the open when it is raining. Do not expose the hot glue gun to spray water jets. Disconnect the hot glue gun from the power supply when not in use and during work breaks of more than 30 minutes.

NEVER place objects other than the recommended glue sticks in the hot glue gun. Do not fill with liquid or pasty glues.

NEVER remove a glue stick that is already inserted into the hot glue gun. This may result in irreparable damage to the gun.

When inserting a new glue stick wait a short time to allow the new glue stick to heat up.

If the rate of feed of the glue stick is excessive it may stick in the gun and block the feeding mechanism. Do not forcefully push the glue stick into the gun, but allow the gun to reheat.

NEVER unplug the hot glue gun by pulling on the cable. Disconnect the device from the power supply by pulling the plug.

**ATTENTION!** The hot glue gun must be placed on the integrated stand when not in use. The stand is also intended for cooling after use. Remember that any remaining glue residue from the nozzle may drip onto the underlying material.

For household and similar use only.

**CLEANING:** Disconnect the hot glue gun from the power supply before cleaning. Wipe the hot glue gun housing with a slightly damp cloth and dry it afterwards. Never use solvents or strong cleaners.

**MAINTENANCE:** Disconnect the hot glue gun from the power supply before maintenance. Do not open the device yourself – risk of injury! Do not oil or grease any parts. The device must NOT be damaged. Repair or replace the device before use.

**MODIFICATION of the product:** Modification of the components included in the QUIXX Dent Repair Kit is NOT permitted.

**RECOMMENDATIONS FOR REPAIR:** If the power cord is damaged it must only be replaced by a qualified person to exclude any hazards. If damage occurs to individual components of the QUIXX Dent Repair Kit, in particular but not limited to the hot glue gun, these components must be disposed of properly and no further use made of them.

This device is marked in accordance with the requirements of the European Directive 2002/96/EC on Waste Electrical and Electronic Equipment (WEEE). Products subject to this directive are marked with a symbol of a crossed-out waste bin which indicates that disposal in normal household waste is forbidden. Disposal of this product at a recycling facility with a separate collection for electrical and electronic equipment.

**B) INSTRUCTIONS for using the hot glue gun**

1) Fit the stand (metal bracket (b)) in the holes provided in the front left and right of the housing of the hot glue gun (a) in order to ensure that the hot glue gun (a) is securely positioned. 2) Insert a glue stick (c) through the feeder on the back of the hot glue gun. 3) Then press the trigger 2-3 times until the glue stick is firmly seated in the hot glue gun. 4) Let the hot glue gun preheat for about 5 minutes. The hot glue gun is ready for use when adhesive is ejected from the front of the nozzle when the trigger is pressed. During preheating make sure that the hot glue gun is in a stable position. 5) After completing the repair unplug the hot glue gun from the power outlet, place the it on the wire stand and let it cool – DO NOT attempt to remove any unused glue stick from the hot glue gun and do not put the hot glue gun away until it has cooled down fully.



- a) 1 Hot glue gun
- b) 1 Metal bar (stand) for the hot glue gun
- c) 2 Special glue sticks
- d) 3 Tension plates in different sizes
- e) 1 Rotating knob
- f) 1 Plastic rod to remove glue residue
- g) 1 Repair bracket

**C) INSTRUCTIONS for repairing dents with the QUIXX Dent Repair Set**

1) Clean the surface of the damaged area with a clean, damp cloth. 2) Prepare the hot glue gun described in B) **Instructions for using the hot glue gun.** 3) Select a tension plate (d) suitable for the size of the dent. (Note: The larger the tension plate, the greater the tensile force). The tension plate must be smaller than the dent. 4) Apply a generous amount of hot glue (c) from the hot glue gun to the dent. 5) Apply the tension plate. Make sure that all of the 4 holes in the tension plate are filled with glue (see Image 2). Immediately place the tension plate in the middle of the dent and hold it in position until it bonds (Image 3). 6) Allow the glue to cure for approximately 8 minutes. We recommend that you do not allow the glue to cure for longer than 10 minutes. 7) Centre the hole in the repair bracket (g) over the screw thread in the tension plate. Screw the rotating knob (e) onto the screw thread of the tension plate. Turn the rotating knob slowly clockwise until the desired deformation is achieved or until the tension plate detaches from the surface (Image 3). 8) If necessary, repeat the procedure to further improve the result. 9) Carefully remove any remaining glue with the plastic rod (f) (Image 4).

**D) IMPORTANT INFORMATION:**

The ideal temperature range for eliminating dents is an outside temperature of 18-30 degrees Celsius. Lower temperatures, carry out the repair in a garage or preheat the vicinity of the dent using a hairdryer. The dent does not disappear completely, repeat the procedure until the desired result has been achieved. (Note: Some dents may not be 100% repairable). If the paint has cracked or flaked, applying the glue to the dent may cause the paint to peel off. If glue residue remains on the vehicle or the metal plate it can be removed with isopropyl alcohol. Apply a few drops to a cloth and wipe the affected area for a few seconds using gentle circular movements. Before doing so test the compatibility of the paint and isopropyl alcohol on an inconspicuous location.

**E) TECHNICAL DATA:**

Dimensions: 170x141x30 mm	Rated voltage: 230 V 50/60 Hz	
Power: Rest phase: 12 W	Heating phase: 40 W	Melting temperature: 170°C
Heating time: 8-10 minutes	Glue cartridge diameter: 11mm	Protection class: II

**F) DISPOSAL:**

Disposal instructions (2012/19/EU, 2006/66/EC)  
Electrical and electronic equipment must not be disposed of in household waste. The consumer is obliged to return electrical and electronic equipment at the end of its service life to the public collection points set up for this purpose or to the point of sale. Details are regulated by the respective national law. The symbol on the product and/or on the packaging refers to these regulations.

**G) CE CONFORMITY:**

Declaration of conformity: E.V.I. GmbH hereby declares that the product (Art.Nr., XY-15305) complies with the Directive (LVD 2014/35/EU, EMC 2014/30/EU, RoHS 2011/65/EU). The complete EU Declaration of Conformity is available for download at [www.quixx.com](http://www.quixx.com).

**SPECIAL GLUE STICKS:**



**WARNING!** May cause an allergic skin reaction. Keep out of reach of children. Wear protective gloves/protective clothing/eye protection/face protection. **IF ON SKIN:** Wash with plenty of water. If skin irritation or rash occurs: Get medical advice/attention. Dispose of contents, container to a hazardous or special waste collection point.

**COLOPHONIUM**