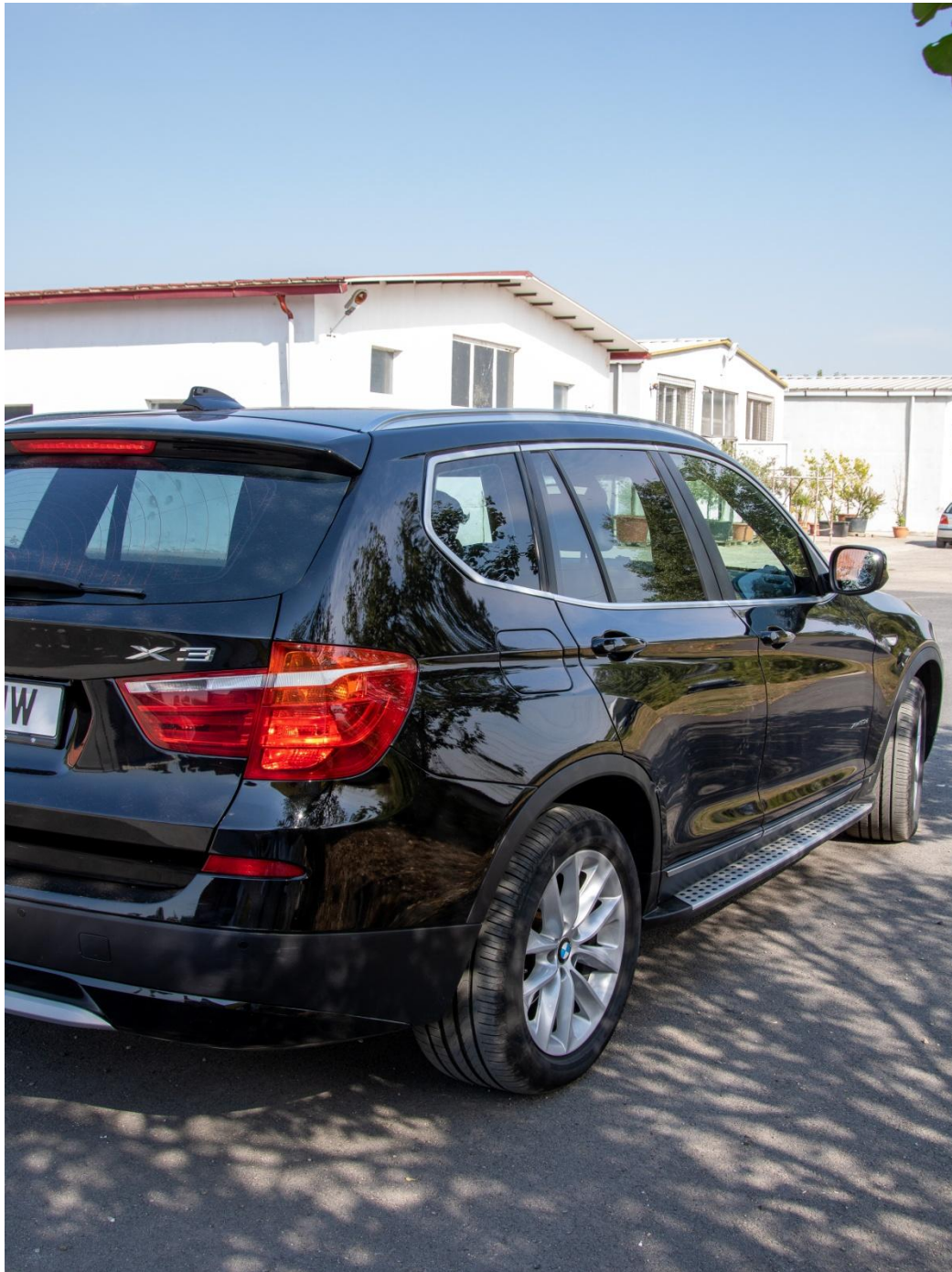


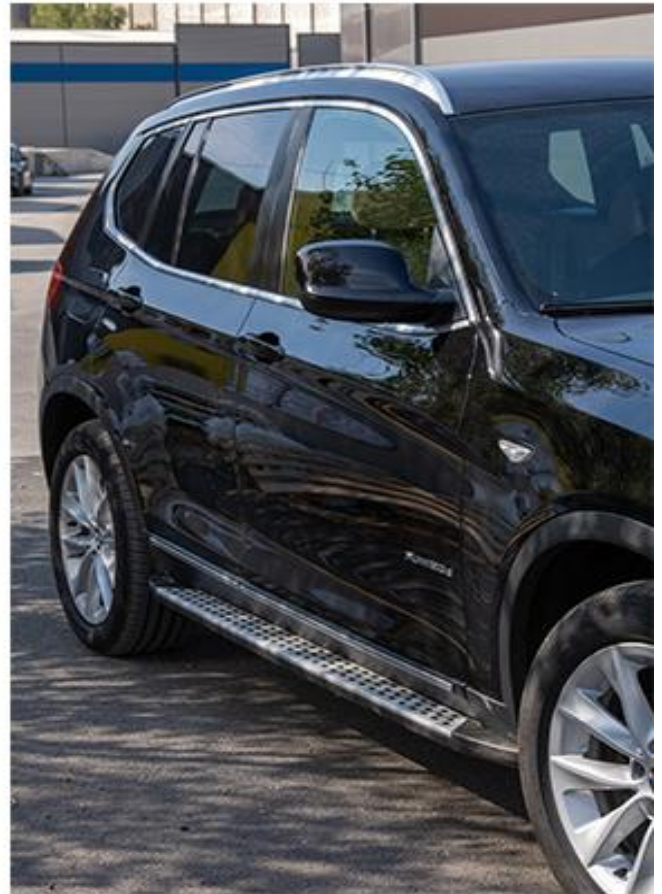
Running Boards suitable for **BMW** **X3 F25** (2011-2017) Side Steps



BEFORE



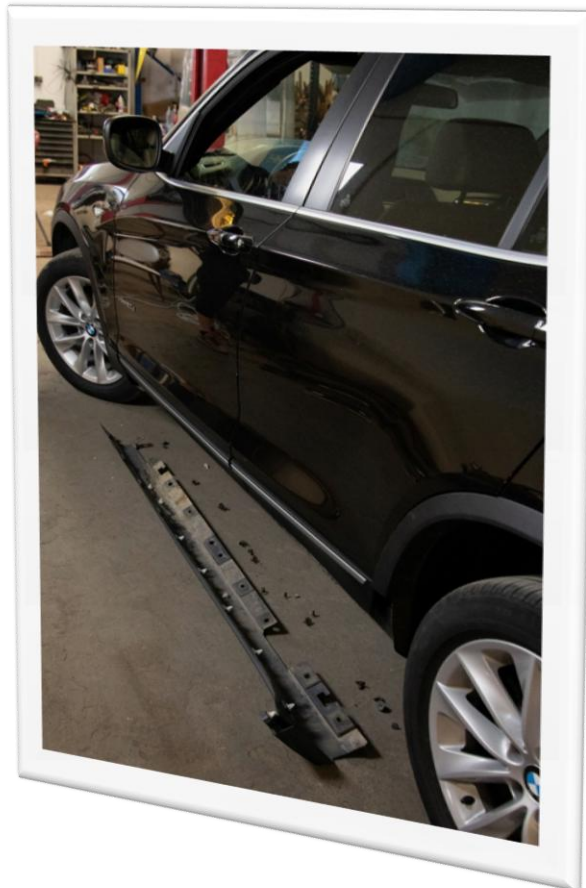
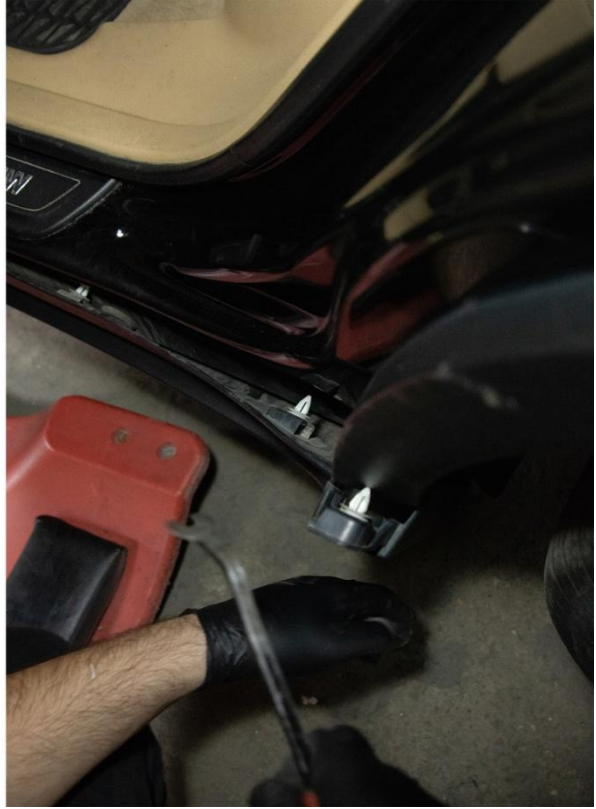
AFTER



1) The removal of the Running Boards Side Steps / Dezasamblarea pragurilor vechi

- a) Undo the screws below and those on the side/Desfaceti suruburile de dedesubt si cele din lateral





**1) Fitting the brackets/
Montarea prinderilor**

Legend/ Legenda



FRONT OF THE CAR

BACK OF THE CAR



*** fit the brackets in this order A – B – C**

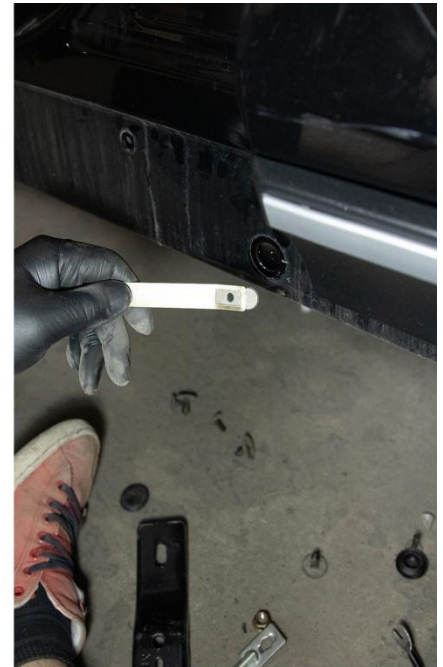
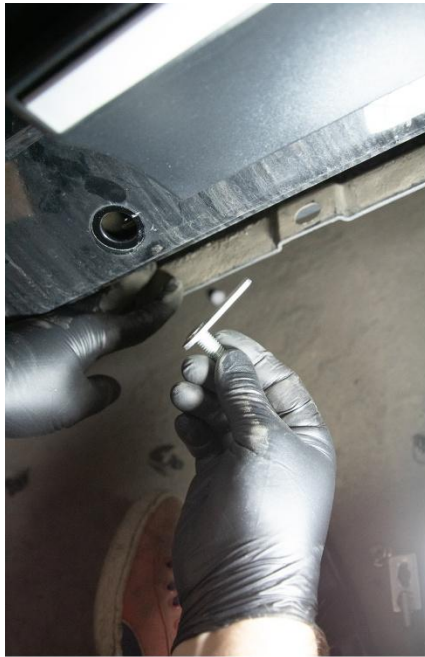
- A)** - Undo the caps below and from the side /Desfaceti capacele de dedesubt si de pe lateral

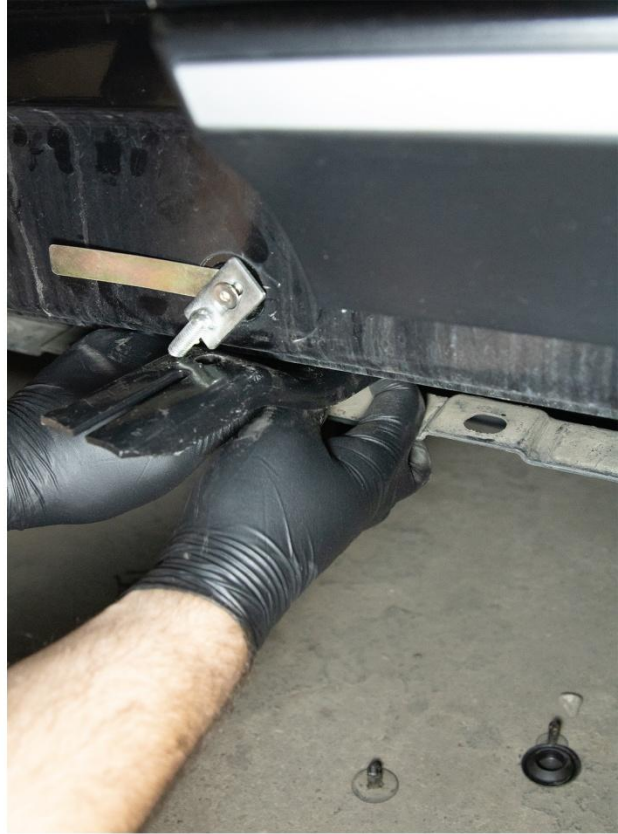


****Use the legend for the next few steps***

- Put the item no 2 into the hole below the side step and the item no 4 in the hole from the side and fix it with the item no 3 and a screw. Link the item no 1 with the items no 2 and 3. After that, use 2 screw nuts to tighten the screws below.

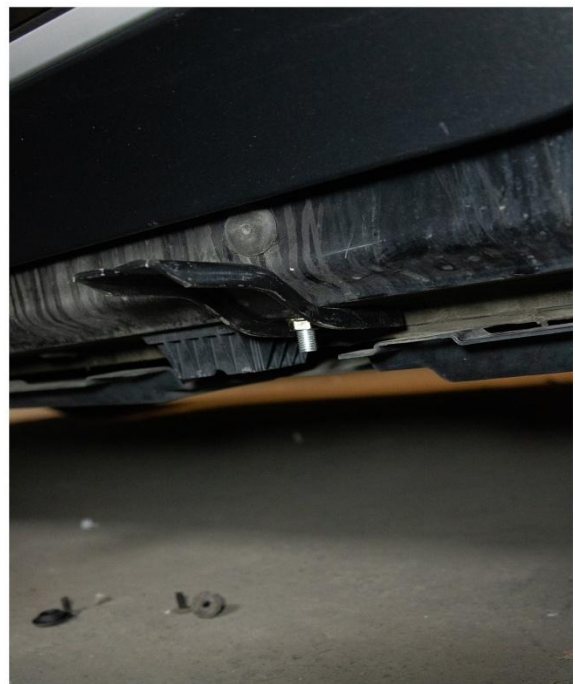
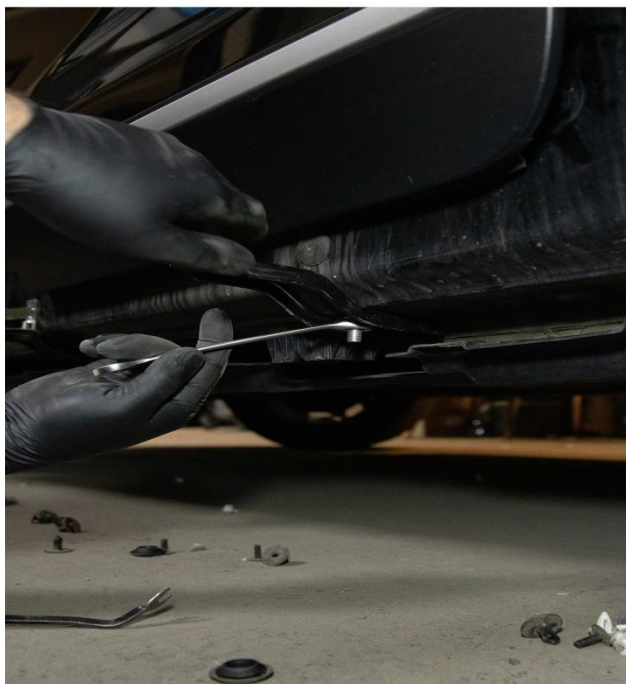
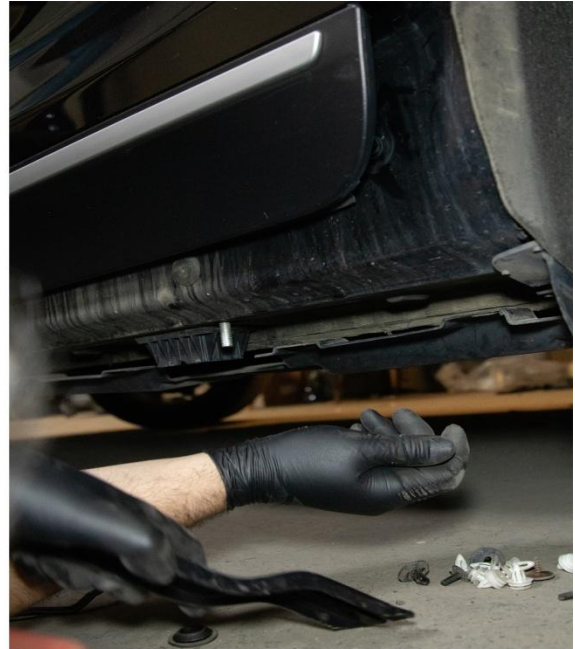
(Puneti articolul 2 in orificiul de sub prag si articolul nr 4 in gaura din lateralul pragului si fixati-l cu ajutorul articolul nr 3 si un surub. Uneste articolul 1 cu articolele 2 si 3. Dupa aceea, folositi 2 piulite pentru a strange suruburile de dedesubt)





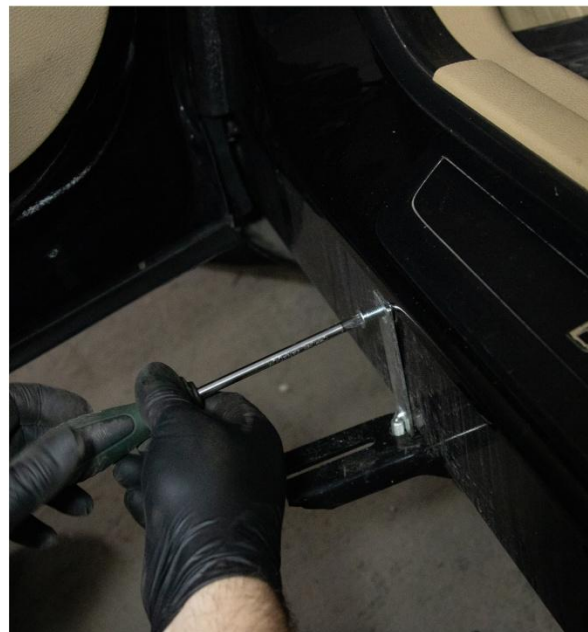
- B)** – Put the item no 2 into the hole below the side step and link it with the item no 1.
After that, use 1 screw nut to tighten the screw below.

(Puneti articolul 2 in orificiul de sub prag si uniti-l cu articolul nr 1. Dupa aceea, folositi o piulita pentru a strange surubul de dedesubt)



C – Put the item no 2 into the hole below the side step and fix the item no 3 with a screw on the side of the car. Link the item no 1 with the items no 2 and 3. After that, use 2 screw nuts to tighten the screws below.

(Puneti articolul 2 in orificiul de sub prag si fixati articolul nr 3 cu un surub pe lateralul pragului. Dupa aceea, folositi 2 piulite pentru a strange suruburile de dedesubt)





2) Fitting the side skirts/ Montarea pragurilor

- Put the rivet clips on the side skirts and adjust the screws according to the brackets.
(Puneti clemele pe praguri si aranjati suruburile in functie de prinderile pragurilor montate anterior pe masina)







- Fit the side skirts from the front of the car





- Tighten the screws underneath the Side Steps and from the sides / Strangeti suruburile de sub praguri si pe cele din laterale









3) The result it's kinda great 😊 / Rezultatul este destul de grozav





