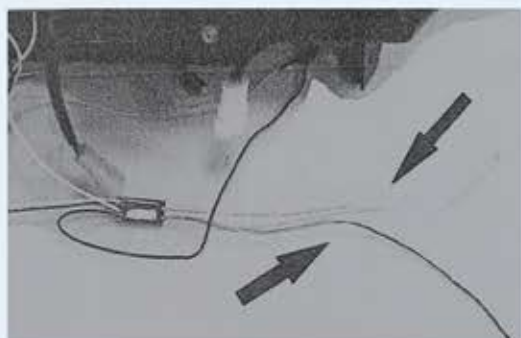


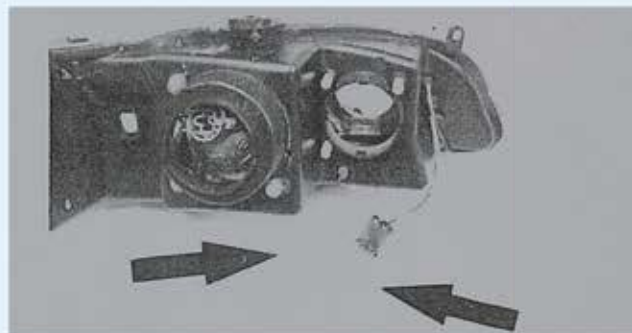
Step 1.

Connect the black line to the negative of the park/signal/side marker lamp



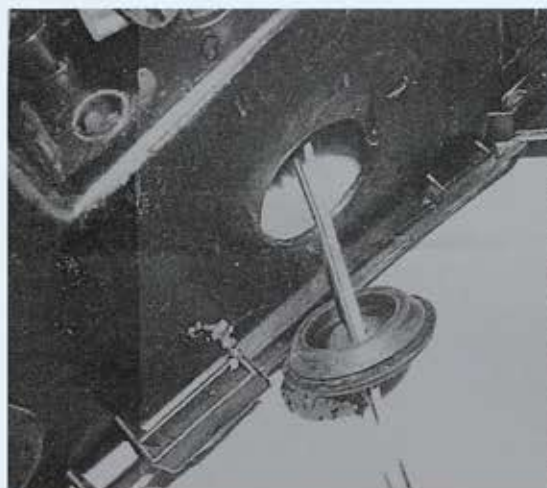
Step 2.

Pull out the bulb and change the new one
(bulb type: 16.5v/0.27W)



Step 3.

Remove the rubber cover and unlock the socket of the HALO-RING.



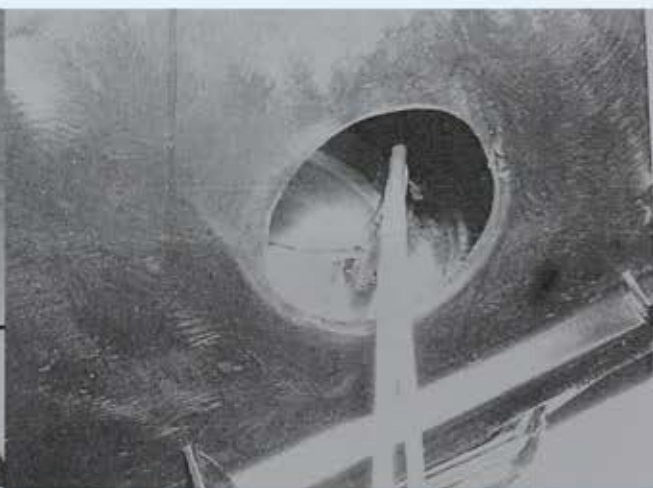
Step 4.

Follow the instruction and connect the wire.



Step 5.

Lock the socket back and put back the rubber cover.
(Avoid the leaking, make sure the cover is assembled steadily)



How to connect the wire with the clip, open the clip, put the connect wire into the clip, then close the clip before forte it till the clip cover steadily.

