



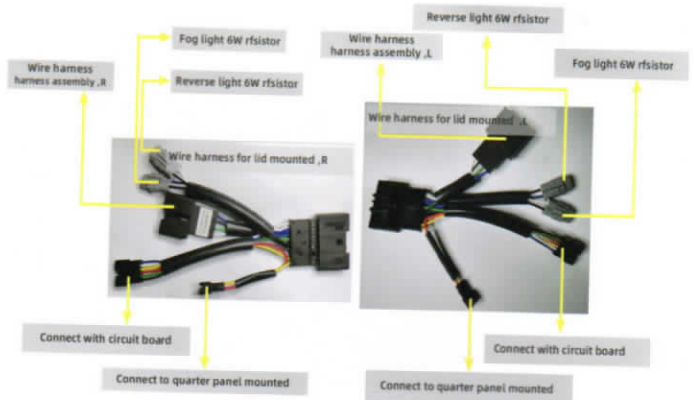
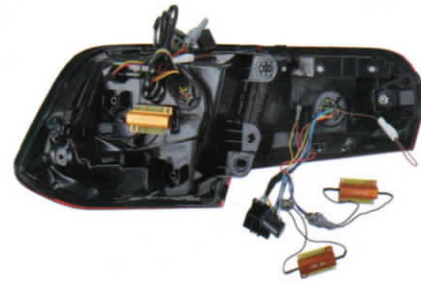
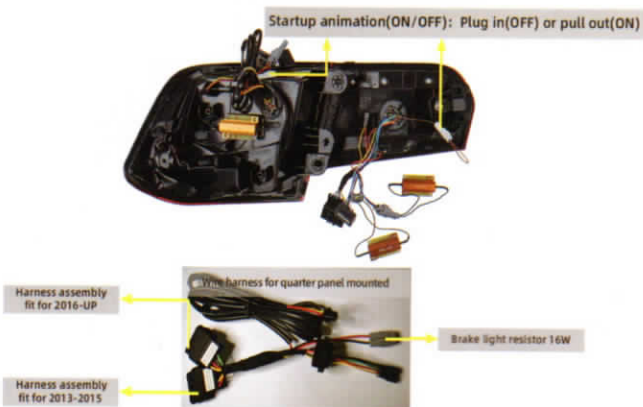
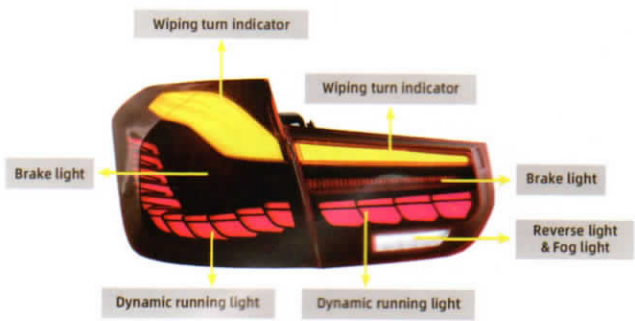
VLAND

Table of Contents
(目录)

Headlight installation guide -English ----- P1
(安装引导-英文版)

Headlight installation guide -Chinese ----- P8
(安装引导-中文版)

Qualification Certificate ----- P15
(合格证书)



RATED VOLTAGE: 12V			
RUNNING LIGHT POWER	13.2W	TURN SIGNAL POWER	10W +102 DUMMY LOAD
BRAKE LIGHT POWER	8.2W +10Q DUMMY LOAD	FOG LIGHT POWER	1.8W +30Q DUMMY LOAD
REVERSE LIGHT POWER	1.8W +30Q DUMMY LOAD	SUITABLE YEAR	2013-2018



Vland highly recommends professional installation



Safety Goggles



Safety Gloves

Soft Towel
(lay out over work area)storage tray box
prevent missing parts

Wire Crimper



Soldering Iron

12V Test Light
Volt Meter

Electrical Tape



Screwdriver



Socket Wrench



Panel Popper

Installation Tips:

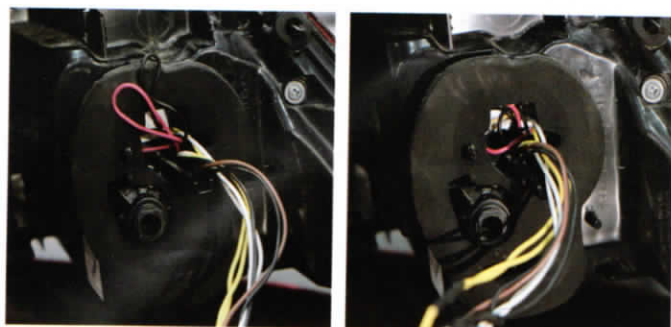
- Always wear eye protection and safety gloves to avoid any possible injuries.
 - DO NOT cut or connect any wires without identifying them to avoid any possible electrical short circuit.
 - Vland recommends soldering each wire connection for optimal connectivity
 - Please check to ensure no electrical connection is exposed after installation
- To prevent damage to the product or vehicle, please use electrical tape or zip ties to organize loose wires.

Note: Installation may vary depending on the vehicle.
Removal of your vehicle's bumper may be required.

Warning: Please use the recommended safety equipment when installing Vland Headlights. Vland is not liable for any injuries or accidents that may occur during installation.

Please read carefully before installation

Professional installation is highly recommended. Vland is not responsible for any damages or injuries due to improper installation.



Note: The above figure is a demonstration of individual errors, not only for this product. Make sure you have install it properly to avoid installation gaps, water leakage, and other situations.

Condensation Vs. Water Leak

Manufactures note: Condensation is a common problem that all car light manufacturers encounter. As climate changes, the humidity in the headlights can cause the fog. Once the headlights are turned on, the heat produced from the bulb will cause condensation.



Lens Fog build up

A. Slight fog or light condensation is normal. If this happens, park your vehicle in the sun to alleviate the condensation. Then reseat all gaskets and caps to ensure they are tightly sealed.



Water Leak

B. This is a image of an actual water leak. If this occurs please refer to your warranty guide either found in your packaging or please visit our website for more information

To prevent condensation please check that all rubber gaskets, seals and o-rings are tightly sealed and secured.



Fig. C

Never place the lens down

Helpful hints:

- Fitment is not guaranteed if the vehicle has been in a prior collision.
- To avoid scratches and damage to your Vland Headlight. Never lay the item on the lens face down, as shown in Fig C.
- Do not modify, after, or tamper with this product in any way. Failure to comply will void your warranty.

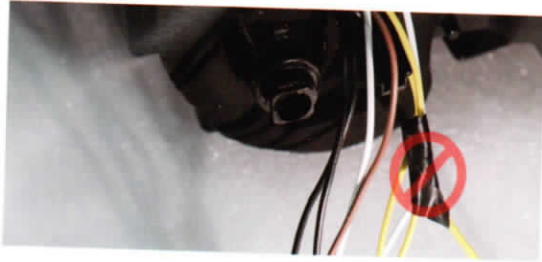
Warning:

Do not attempt to re-seal, bake or rinse your headlights out. This can cause damage to your headlights and its internal electronic components.

Black will always be a ground wire, any colored wire including white is a power wire and will be hooked up to running lights

Most headlights feature individual LEDs to add an extra accent to enhance the appearance of your vehicle.

(-) (+)



Warning: Vland does not recommend self installation for any electrical wiring. We recommend highly trained professionals to properly connect your electrical components. Vland is not liable for any damages or injuries due to improper installation.

Note: Image display are for instructional purpose only, actual product may vary.

