

# BMW New 5 series intelligent electric suction door Installation process diagram

All the pictures in this manual are for reference only. There are slight differences between the pictures and the real objects due to different models, but the installation method is basically the same.

## preface

Thank you for choosing our intelligent electric door. I believe this product can bring you a comfortable, safe and convenient driving experience.

This manual will introduce the function, installation and performance of BMW New 5 series special intelligent electric door system. Please read this manual carefully before using this product.

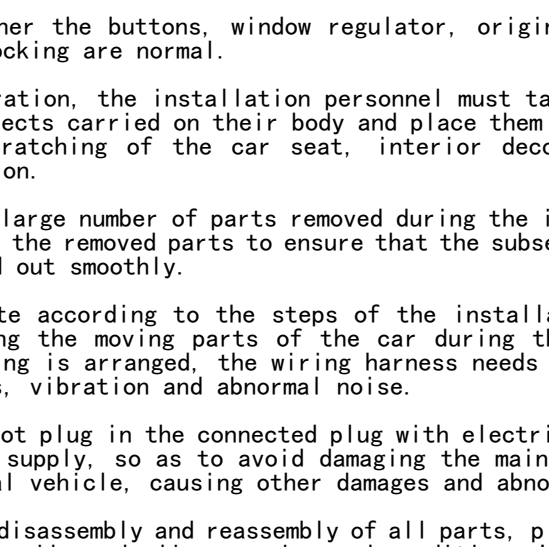
In order to ensure the normal use of this product, please operate according to the installation of this manual, so as to avoid loss and injury due to improper operation.

Intellectual property rights of intelligent electric suction door and its accessories belong to the company and are protected by the laws of the people's Republic of China.

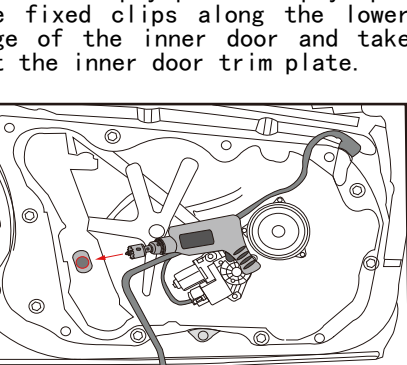
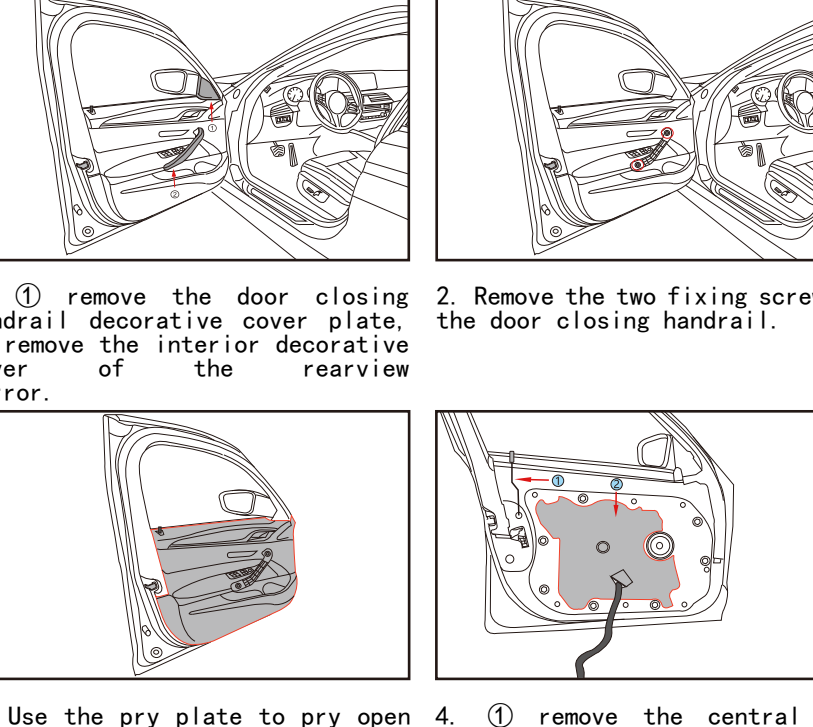
## Product function introduction

1. Close the door gently when the door lock reaches the first level lock, the electric suction door motor will start to quietly suck and lock the door, and the components of the lock will automatically return to the original position.
2. The traditional door adopts the inertial gravity locking device, which requires a large force to fully close. This will not only generate a lot of noise, but also make the air in the closed car generate high pressure, instantly making the eardrum and body feel uncomfortable and uncomfortable. After the intelligent electric suction door is installed, the discomfort can be effectively removed. Especially in the case of narrow parking space, just close the door gently, and the electric suction door will close automatically, which is convenient and comfortable.
3. Electric suction door — generally only available for high-end luxury models. This intelligent electric suction door can also bring you high-end, comfortable, convenient and safe driving enjoyment.

## 一、 Installation position on the vehicle



## 二、 List of accessories



## 三、 Tools required

Electrical tape, cross screwdriver, slotted screwdriver and sundry

## 四、 Precautions for disassembly and assembly

1. Before installation, in order to ensure the safety of operation, removing the negative pole of the battery will cause the glass to fail to rise and fall, and some high-end vehicles need to activate the electrical appliances on the vehicle after removing the battery, so the previously stored settings will disappear, so the battery cannot be removed. Please check whether the type and quantity of parts are complete, and wrap the vulnerable and scratched parts with pearl cotton before installation.
2. In order to ensure the safety and normal use of the product, please install it by professional staff. Do not dismantle the machine without permission to avoid unnecessary damage.
3. Check whether the buttons, window regulator, original door lock, door closing and locking are normal.
4. Before operation, the installation personnel must take off the metal or other hard objects carried on their body and place them outside the vehicle to prevent scratching of the car seat, interior decoration, door, etc. during operation.
5. Due to the large number of parts removed during the installation, please properly place the removed parts to ensure that the subsequent recovery work can be carried out smoothly.
6. Please route according to the steps of the installation flow chart to avoid affecting the moving parts of the car during the routing process. After the wiring is arranged, the wiring harness needs to be fixed to prevent looseness, vibration and abnormal noise.
7. Please do not plug in the connected plug with electricity after connecting the power supply, so as to avoid damaging the main engine or the fuse of the original vehicle, causing other damages and abnormalities.
8. During the disassembly and reassembly of all parts, please confirm whether the rubber nails and clips are in good condition. If they are damaged, please replace them to avoid abnormal noise during driving.
9. In the narrow position of the operation space, take care that the screws fall into the vehicle. If the screw falls into the car, please take it out, otherwise, the car will make a strange noise when walking.

## 五、 Removal steps of left front door panel (the removal of right front door is basically the same)

1. ① remove the door closing handrail decorative cover plate, ② remove the interior decorative cover of the rearview mirror.
2. Remove the two fixing screws of the door closing handrail.
3. Use the pry plate to pry open the fixed clips along the lower edge of the inner door and take out the inner door trim plate.
4. ① remove the central lock indicator push rod; ② remove the muffler cotton on the door middle plate.
5. Use a 23mm diameter hole opener to open the hole at the position indicated by the arrow above. (Note: the power take-off clamp shall be closed when opening.)
6. Remove the fixing screws on the loudspeaker and remove the loudspeaker.
7. Plug in the window regulator controller and adjust the window to a proper position. (Note: adjust the fixing screw hole of window lifter to the position of snap)
8. ① push the glass up by hand and press down the glass fixing buckle with a small screwdriver.
9. ② push the glass up by hand and press down the glass fixing buckle with a small screwdriver.
10. Push the glass to the closed state and stick it on both sides with electrical tape.
11. After unscrewing the fixing buckle on the sound insulation board, remove the fixing screw and remove the sound insulation board.
12. Remove the fixing screws of the lock head of the original vehicle.

13. remove the decorative cover of the fixing screw of the key emergency lock cylinder, and loosen the fixing screw of the lock cylinder of the door handle with the M6 type plum screwdriver. (Note: screws shall not be unscrewed with brute force)
14. Remove the left front door emergency key cylinder.
15. Loosen two fixing screws of the door handle main bracket. Take out the lock of the original car.
16. Take out the lock head and motor box of the original vehicle, and install the cable fixing clip on the motor box to the corresponding position of the lock head. Please refer to the figure above;
17. Install the upper cable dust cover.
18. Install the mounting bracket of the motor box and connect the harness of the motor box with the lock.
19. Assemble the main bracket of the outer door handle and the lock head of the electric suction door, and install the cable of the outer door handle to the corresponding position of the lock head; please refer to the figure above.
20. Plug in the door signal harness connector, smooth the harness, fix the clip on the harness, and install the lock to the original lock installation position.
21. Lock the lock set screw.
22. Install the exterior door handle and key lock cylinder, and fix the screws of lock cylinder.

23. Straighten and fix the harness of motor box, install the fixing column of motor box mounting bracket into the door sheet metal hole, and lock the two fixing screws. (Note: the two fixing holes on the door sheet metal were used to fix the wire harness buckle, and the wire harness can be smoothed and tied with a small tie strip.)
24. Install the sound insulation board in place, and clamp the yellow wire in the I-shaped wire in the middle of the original vehicle glass lifter motor harness with the thick red blue wire +12V, and the black wire onto the brown GND ground wire. (Note: the power take-off clamp shall be clamped in place, and the multimeter shall be used to measure whether there is normal +12V output at the wire harness end)
25. ① after the electric suction door is installed, please refer to the half lock position to test whether the electric suction door is normally closed. After unlocking by pulling the external handle, repeatedly simulate the closing action, and check whether the motor box can drive the locking tongue to engage. At this time, if the suction is normal, it is considered that the installation is not in place, and the installation needs to be adjusted (refer to the installation instructions).
26. ② after the electric suction door is installed, please refer to the half lock position to test whether the electric suction door is normally closed. After unlocking by pulling the external handle, repeatedly simulate the closing action, and check whether the motor box can drive the locking tongue to engage. At this time, if the suction is normal, it is considered that the installation is not in place, and the installation needs to be adjusted (refer to the installation instructions).

## 六、 Disassembly and assembly steps of right rear door (the disassembly of left rear door is basically the same)

1. Remove the door closing handrail decorative cover plate.
2. Remove the two fixing screws of the door closing handrail.
3. Use the pry plate to pry open the fixed clips along the lower edge of the inner door and take out the inner door trim plate.
4. Unplug the harness plug of window regulator opener, and use a 23mm diameter hole opener to open a hole in the middle of the original vehicle glass lifter motor harness. (Note: the power take-off clamp shall be closed when opening.)
5. Plug in the window regulator controller and adjust the window to a proper position. (Note: adjust the fixing screw hole of window lifter to the position of snap)
6. Push the glass up by hand and press down the glass fixing buckle with a small screwdriver.
7. Push the glass to the closed state and stick it on both sides with electrical tape.
8. Unscrew the sound insulation board, remove the fixing screw and remove the sound insulation board.
9. Remove the fixing screws of the lock head of the original vehicle.
10. Remove the fixing clip of the original vehicle harness.
11. Plug in the door signal harness connector, smooth the harness, and install the lock to the original lock installation position.
12. Install the harness buckle of the original vehicle into the mounting hole on the mounting bracket of the rear door motor box, and install the mounting bracket of the motor box in place as shown by the arrow above, and install the locating piece.
13. Lock the fixing screws.
14. Install the sound insulation board in place, clamp the yellow wire in the I-shaped wire harness with fuse box onto the chakra and blue wire +12V on the original vehicle glass lifter motor harness, and clamp the black wire onto the brown GND ground wire. (Note: the power take-off clamp shall be clamped in place, and the multimeter shall be used to measure whether there is normal +12V output at the wire harness end)
15. ① after the electric suction door is installed, please refer to the half lock position to test whether the electric suction door is normally closed. After unlocking by pulling the external handle, repeatedly simulate the closing action, and check whether the motor box can drive the locking tongue to engage. At this time, if the suction is normal, it is considered that the installation is not in place, and the installation needs to be adjusted (refer to the installation instructions).
16. ② after the electric suction door is installed, please refer to the half lock position to test whether the electric suction door is normally closed. After unlocking by pulling the external handle, repeatedly simulate the closing action, and check whether the motor box can drive the locking tongue to engage. At this time, if the suction is normal, it is considered that the installation is not in place, and the installation needs to be adjusted (refer to the installation instructions).

## 七、 Simple troubleshooting

If the electric suction door fails, it can be handled according to the corresponding troubleshooting method in the table.

fault	resolvent
Electric suction door does not work	1. Check whether the plugs are well connected, check the motor box transfer harness, and plug it again if necessary; 2. Remove the door lock (from the door panel), and power on the power supply line to make the locking tongue to the half locking position, simulate the closing action, and check whether the motor box can drive the locking tongue to engage. At this time, if the suction is normal, it is considered that the installation needs to be adjusted (refer to the installation instructions).
Electric suction door is not sensitive to closing	1. Check whether the cable between the motor box and the lock head is twisted and bent excessively. Generally, the cable head end on the lock head and the motor box head end are most easily bent, which needs special attention; 2. If the cable does not have the above phenomenon, try to remove the fixed motor box so that the cable line can be smoothed and placed. Use the stick tool to move the locking tongue to the half locking position, simulate the closing action, and check whether the motor box can drive the locking tongue to engage. At this time, if the suction is normal, it is considered that the installation needs to be adjusted (refer to the installation instructions).
Electric suction door cannot be opened	1. Disconnect the power supply fuse or the faulty single door power supply harness for 3-5 minutes, and then power on to make it return to normal operation; resulting in looseness; 2. When the interior door handle of the rear door cannot open the door, it is important to check whether the child lock switch on the door panel is open, and check whether the internal and external handle of the rear door lock mechanism are installed in place and whether the latch clamp is not installed in place.
The electric suction door cannot be closed	1. Check whether the locking tongue is stuck, and try to release the locking tongue with the door handle; 2. Remove the lock head and place the cable line, and try to unlock the lock tongue smoothly.