

20+ BMW 3 series With Upper Latch

20+ 宝马3系上吸

Precautions for installation of electric tailgate

1. In order to ensure the safety and normal use of the product, please hand it over to the professional staff who sell the product for installation. Do not disassemble the machine without permission, so as to avoid damage and accidents.

2. Before loading, start the engine first, check whether the function display of the vehicle instrument, the operation of the keys in the vehicle are normal, and whether the internal and external surfaces of the vehicle are scratched. If there is any problem, report it to the customer in time. 3. Check whether the tailgate is opened / closed normally and whether the lamps are normal.

4. Shut down the engine and prepare relevant tools.

5. The installers should first take off the metal articles and other hard objects carried by them to prevent damage to the car seats or interior trim during disassembly and assembly.

6. During the installation process, pay attention to placing the removed automobile components properly to avoid scratching the instruments and desks in the vehicle. The sundries left during wiring shall be handled in time and shall not be left in the vehicle. The joint must be insulated to prevent short circuit.

7. According to the wiring method of our company, the moving parts of the vehicle, such as the steering wheel transmission shaft, oil, brake pedal and other vehicle control parts, should not be affected during the wiring process. After wiring, all harnesses shall be fixed to prevent loosening.

8. Please connect each harness according to the wiring mode of our company (pay attention to the position of ground wire).

9. Do not plug or unplug the connected leads and accessories when the machine is turned on to avoid damaging the host or accessories.

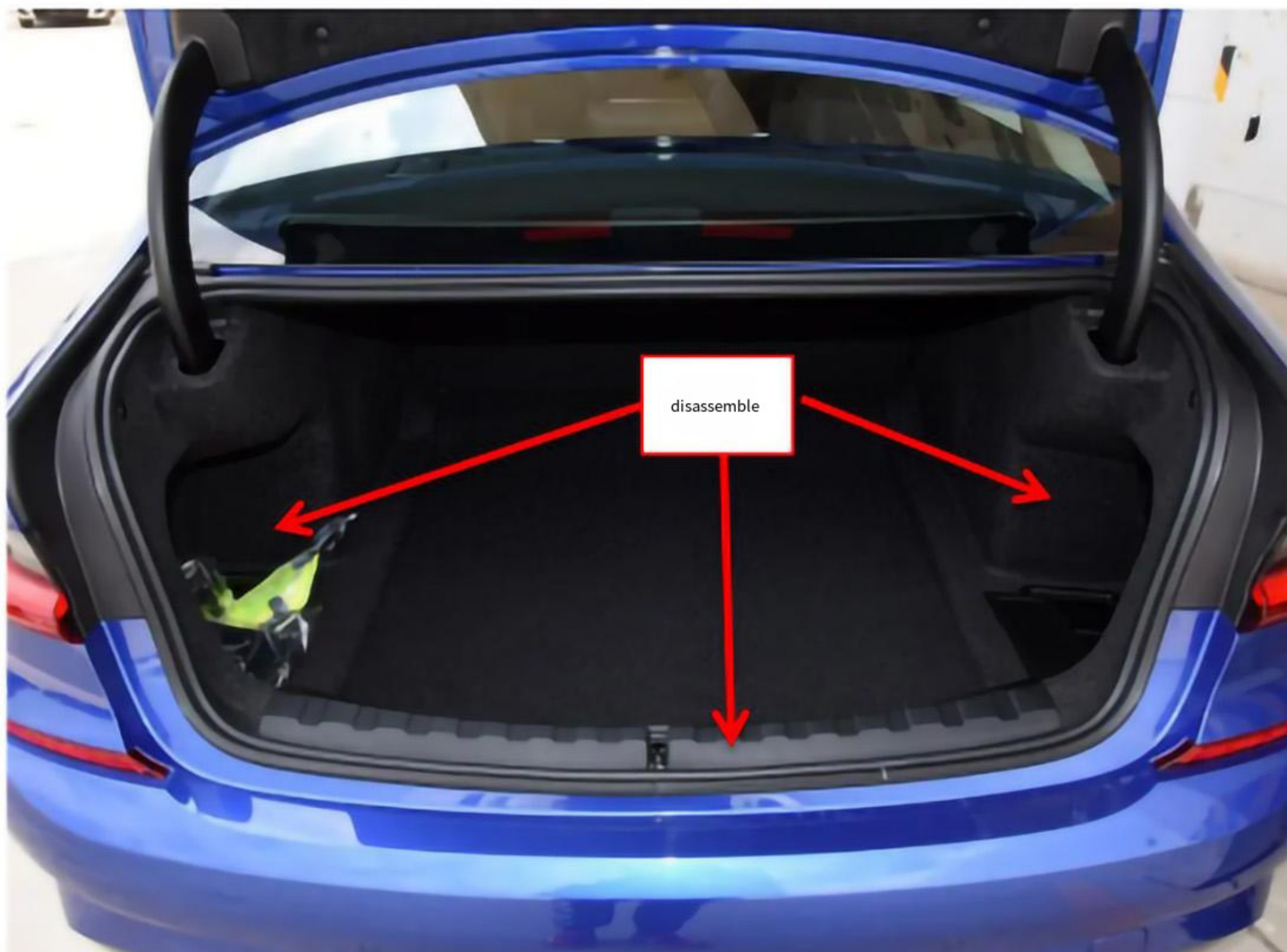
10. If the original vehicle key has a tailgate open key (), please press this key for a long time to open and close the electric tail. If not, please press the unlock key three times to open and close the electric tail.

▲ After installation, close the trunk manually for system initialization
Full set of accessories



Installation instructions

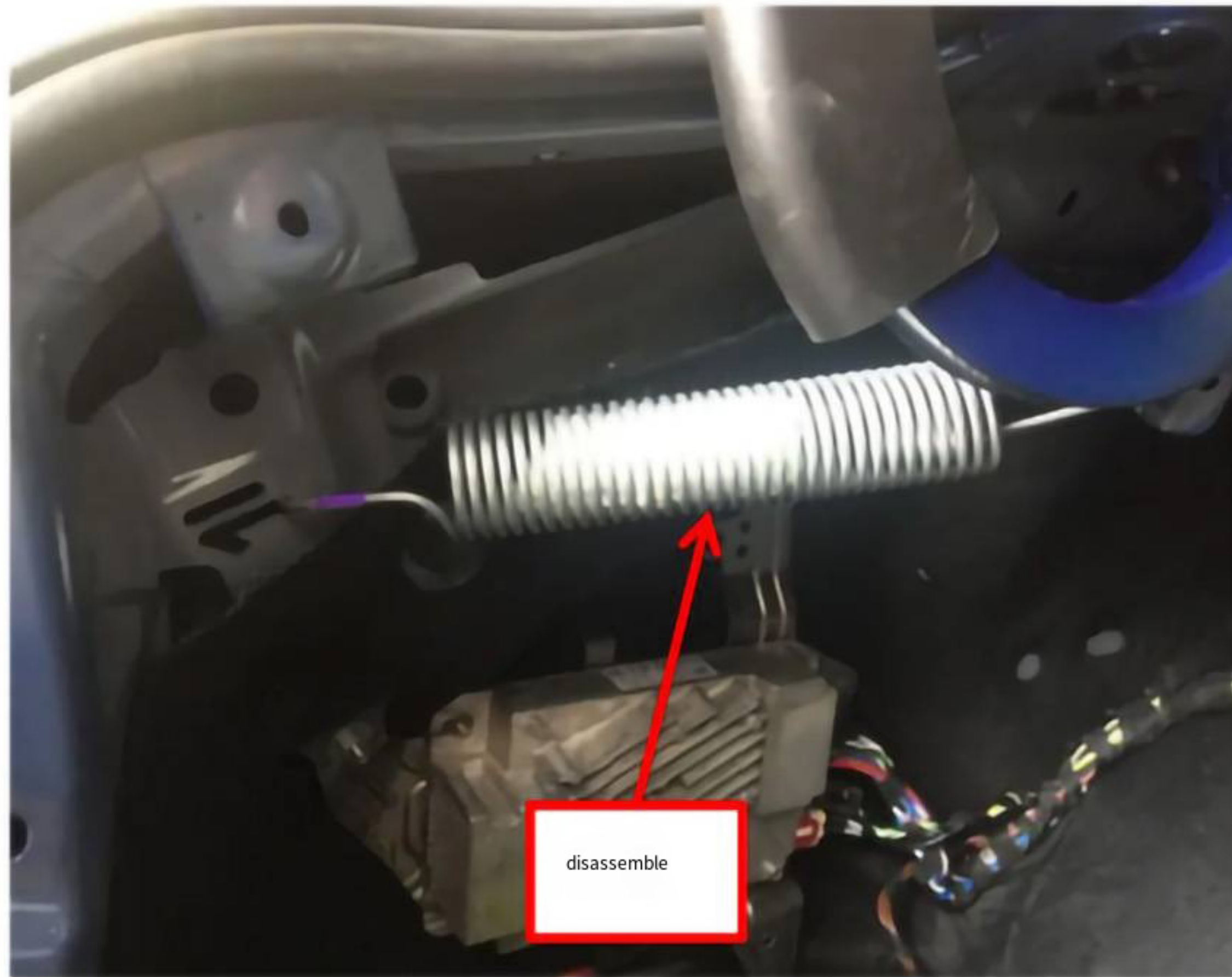
1. Remove the decoration plate and cover plate in the rear trunk



2. Remove the interior decoration of the tail door



3. Remove the original car spring, both left and right.



4. Remove the ball head of the original car and install the ball head of our company, both left and right.

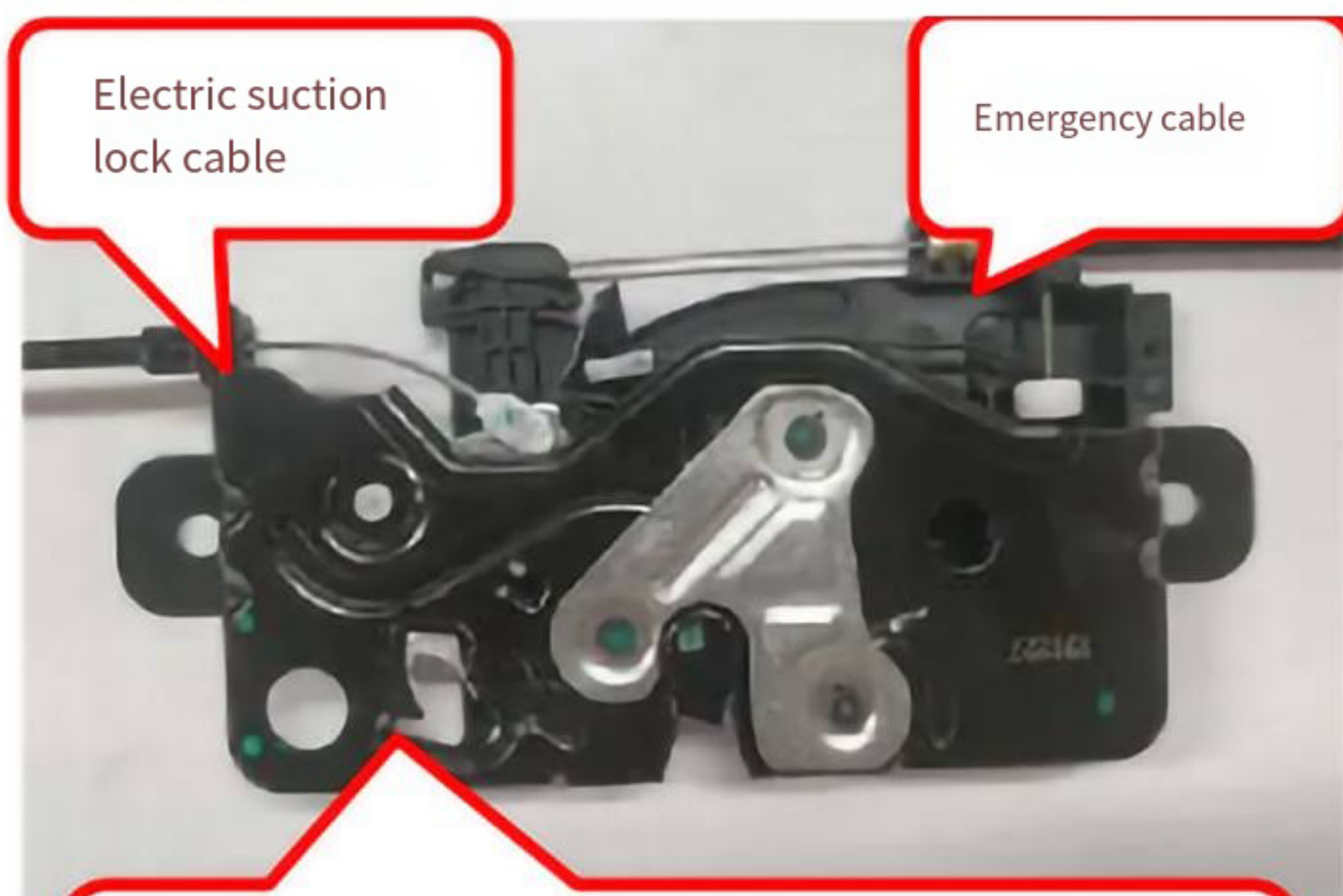


5, the installation of our support rod, need to distinguish between the left and right (L/R); Note the pole orientation and whether the ball circlip has bounced back into place





6, install the electric suction lock block, with the original car screws; The electric suction drive is fixed on the inside of the interior.



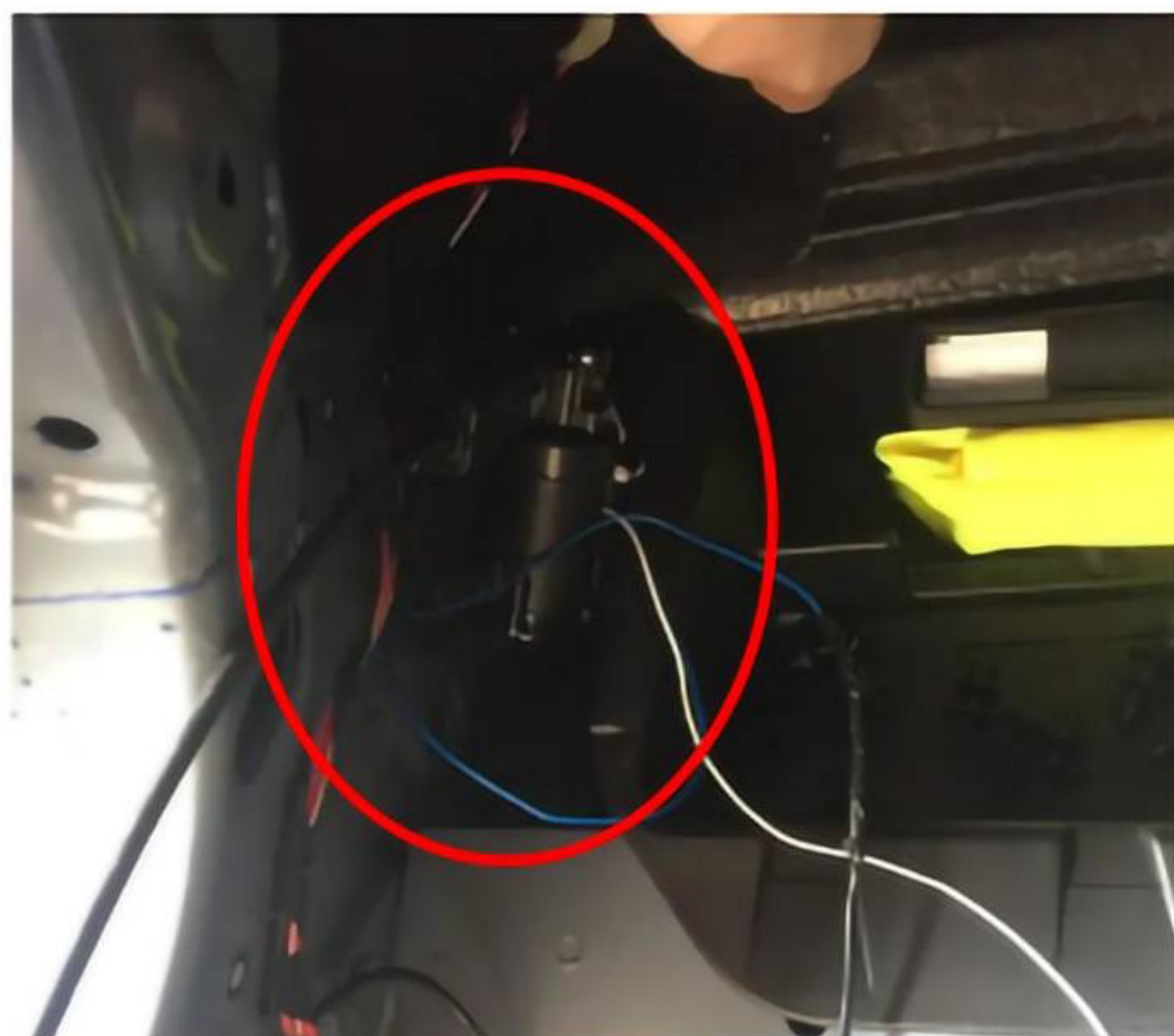
Install the electric suction lock cable and emergency cable on the lock block before installing the lock



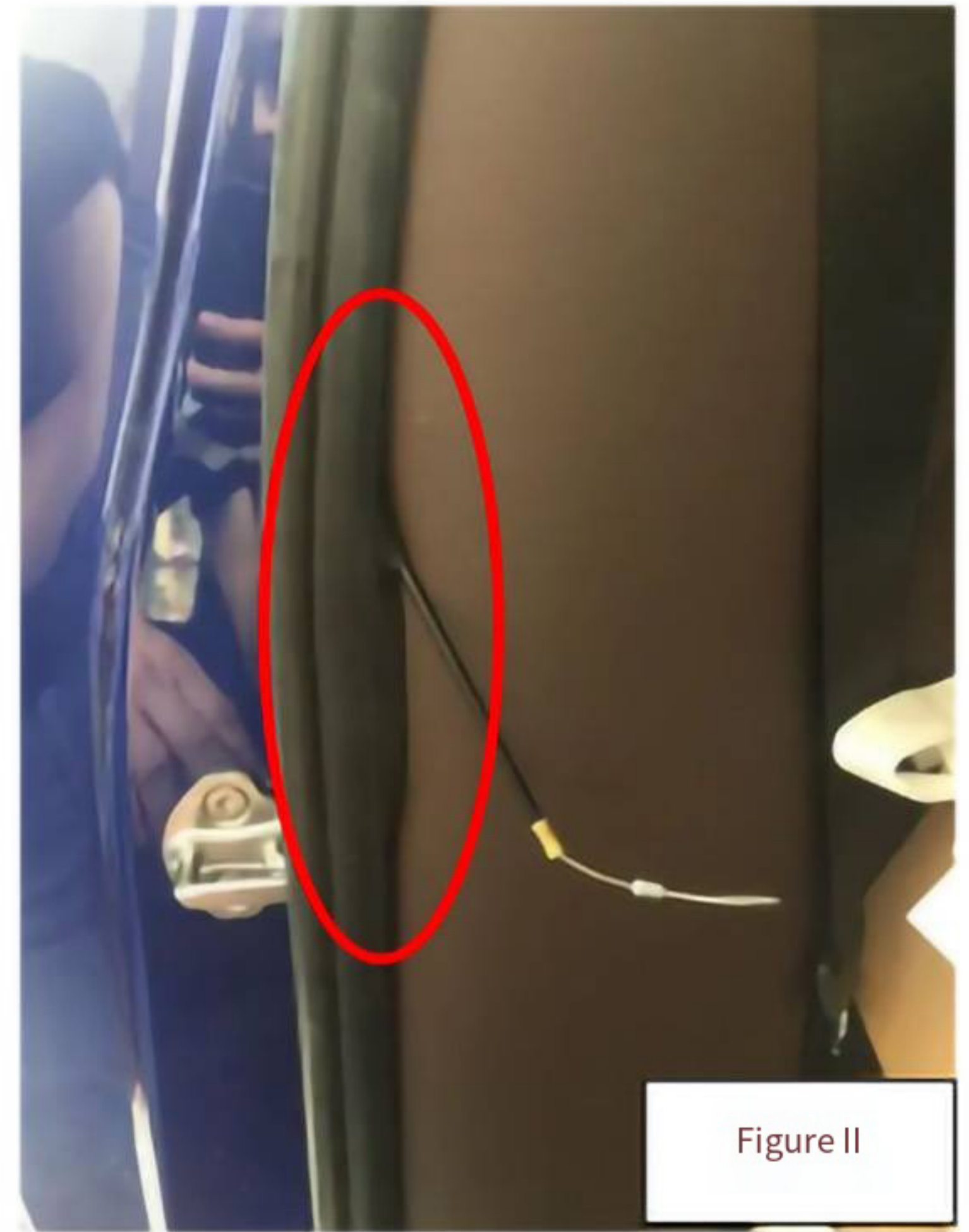
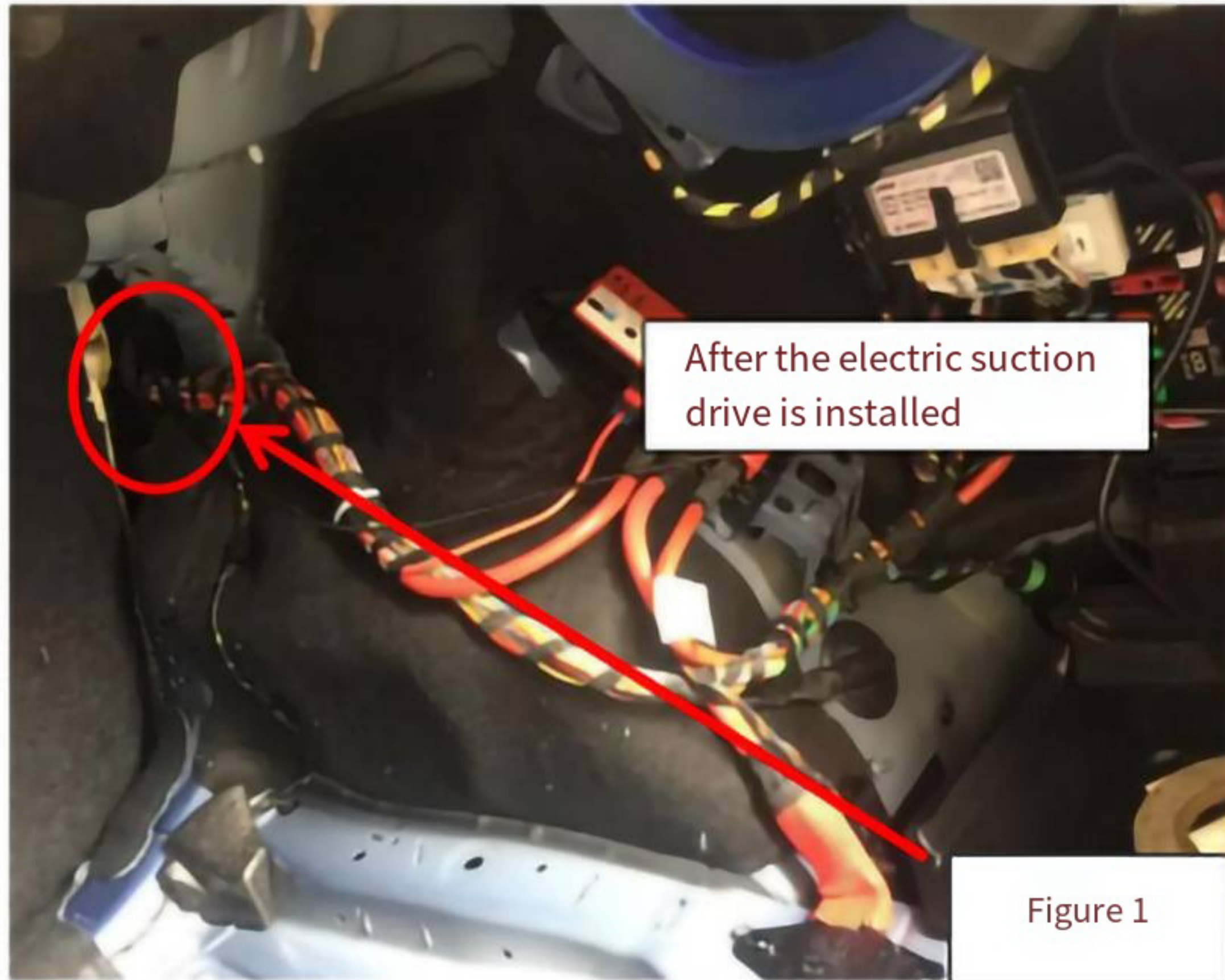
Before installation



post-installation



7. The emergency cable of the upper suction lock is threaded from the position of the red circle in Figure 1 to the rear seat (Figure 2). The emergency cable is placed on the rubber cover of the rear seat. Pay attention to; Keep the emergency cable running smoothly



8, tailgate wiring, install and fix the wiring harness as shown in Figure 1



9, the position of the negative electrode (in the negative electrode of the battery)



10. Install the tailgate switch, make a hole in the switch position shown in the cover plate of the tailgate below, and match the tailgate switch provided by our company



11. After confirming that the wiring harness has been fully connected, you can plug in the fuse; To avoid short-circuit wiring harness, burn parts. The following figure shows the position of the battery in the trunk, and the battery is connected to the positive terminal.



12. Fix the ECU control box with 3M glue as shown in the picture below



13, test the tail door system function is normal, no problem, you can restore the car interior parts

Long press the button of the tail door to press the first sound is to set the height, the second sound is to increase the clamping, the third sound is to increase the closing speed, and the fourth sound is to restore factory Settings



When the tail door cannot open normally, find the emergency safety lock of the original car in the trunk, open the emergency cover, and pull the emergency switch to open it.

Matters needing attention



After installation, please check:

1. Whether the bracket and screws are installed as specified in the installation instructions
2. All plugs are plugged in, left out, and plugged tightly
3. Whether the wiring harness is damaged or cracked due to clamping during wiring
4. Whether the negative pole of the power supply is connected to the special rail position of the original car
5. Check whether the function of the key, front button and tail door latch are normal

Function description

After power-on, you must manually close the door for a second time before the function can be used normally. Note: Do not use a screwdriver or other tools to make the secondary lock as the door closing, otherwise there may be a series of problems such as abnormal opening and closing

1. Switch the tail door control mode

1 Remote control opening and closing: press the remote control unlocking key 3 times (long press the tail door key for some models) to control the opening and closing of the tail door.

Note: Press the unlock key at a constant speed for 3 times within 4s

2. The driver of the tailgate pulls the button: controls the opening and closing of the tailgate. Note: The control mode is the same as before installation. It takes effect only when the car is unlocked

3. Front button/center lock button: Long press the front button for about 1.5s to control the opening and closing of the tail door; If the front button is not installed, press the original central control unlocking button 3 times to control the opening and closing of the taildoor

Note: The front button to open the tailgate function only takes effect when the engine is turned off or in P gear, and the closing function takes effect at any time; The function of opening and closing the tail door by the central control unlocking button only takes effect in the flam-out state

4 Button behind the tail door: press it to close the tail door

2. Anti-clip function

In the process of opening and closing, if there is a barrier, the tail door will stop immediately to avoid accidents

3. Buzzer warning (on and

A. A. After the electric suction is completed, the buzzer will make two quick "beeps"

In the process of closing the tail door, there are corresponding sounds at different stages

Indicates that the electrical suction is normal and the secondary lock is in place

B. After the electrical suction is complete, the buzzer does not sound, indicating the electrical suction reminder. When the electrical absorption is abnormal, the bee is normal and the secondary lock is not in place. The buzzer will warn)

4. Electric absorption function

C. After inhalation or exhalation of the electrical suction, if you hear a long sound of the buzzer for about 10 seconds, it indicates that the electrical suction is faulty (the electrical suction may be stuck or the electrical suction cable is in poor contact). In the process of closing the tail door, it has the characteristics of stable speed and low sound, so that the user experience is more comfortable

5. Instructions for buttons on the rear of the tail door

Adjust the opening height of the tail door by the rear button: manually adjust the tail door to the ideal height when opening the door, long press the rear button, and release after hearing a long buzzer. The height memory is set successfully, and the tail door will be opened to this position next time. Note: The setting height should not exceed the preset height, otherwise it may cause the failure to open and close the door normally

Q&A

A. Proper installation of support:

If the support is installed upside down, the tail door will not close, and it will scratch the body

B. Whether the screws of the bracket are replaced as required:

Bracket screws are not replaced as required and the pole will push up against the screws. Cause the tail door to not close

c. Whether the plug is firmly inserted:

If the plug is not inserted tightly, it may lead to abnormal opening and closing of the tail door, electrical suction is not sucked, key function is not effective, etc

D. Whether the electric pole is installed as required:

The orientation of the motor end of the pole is installed in accordance with the requirements. After the installation of the electric pole, check whether the clamp is stuck in

E. The cable is not installed as required

The original car fuse must be plugged into our company to take the wire, otherwise it may cause the normal use of other electronic products (take the wire has positive and negative, please refer to the installation instructions for correct instructions).

F. Installation of lower pull position:

Whether the position of the electric lower suction ring and the lock head is in the middle, or whether the front and rear are in the right position. If the position of the following suction ring is not in the right position, the tail door will open loudly, and the door cannot be closed.

G. If there is no reaction to the tail door failure after a period of use, it is necessary to check whether the vehicle has insufficient power, or the electric tail door insurance is burned out.

H. Install more than 5kg of sound insulation cotton on the tail door, which will affect the force of opening and closing the door, and need to increase the power of the control box.

1. Reset learning after installation: manually and slowly close the tail door, be sure to close it tightly for the first time, and then press the handle buckle of the original tail door. If the tail door can be opened and closed normally, then learn to install successfully. (If this operation is not done, the electric tailgate will run abnormally

Fault phenomenon	Troubleshooting method
The key of the original car is out of function	1. Check whether the yellow cable is connected to the key unlock signal cable 2. OBD and whether the protocol line is properly connected
Does not work after installation	1. Check whether the positive terminal of the power supply is properly connected 2. Check whether the power cable fuse is properly inserted 3. Check whether the tail door ground wire is connected to the original car ground wire
Tail door doesn't close properly	1. Whether the left and right sides of the pole are inverted 2. Check whether the box wiring harness is properly inserted. 3. Whether the bracket and bracket screws should be replaced according to our instructions 4. There are two anti-collision rubber plugs on the original rear door, whether they are tightened
The tail door switch is abnormal	The first closing is a learning process. If the door is not closed properly for the first time, the opening and closing will be abnormal
The control box will sound an alarm when the taildoor is closed	Check that the trunk is equipped with a trunk pad. If the trunk pad is too high, it will press down on the keys



Anti-clip function:

In the process of opening and closing, if there is a barrier, the tail door will stop immediately to avoid accidents

Note: When closing the door, the anti-clamping force on both sides of the pole is large. Do not try to prevent the side anti-clamping. If there is injury, you will not be responsible