

Electric suction door Installation Guide

Range Rover

Step 1 Remove the trim panel and accessories

Please check the original car central lock, door lock, glass lifter, keyless entry and other functions, before installation, and then disassemble. When removing, pay attention to the position of each power cord plug on the door interior trim panel, and do not insert it in the wrong position during installation.



1 Remove the screw cover of the interior trim panel



2 Remove the interior trim panel screws



3 Remove the small cover plate of the inner handle and remove the screw



4



5



6 Remove the lower screw



7 Remove inner handle cable



8 Disconnect the wiring harness

Step 2 Remove the outer door handle, lock cylinder and original lock block



1 Loosen the fixing screw of mechanical key lock cylinder



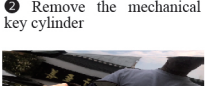
2 Remove the mechanical key cylinder



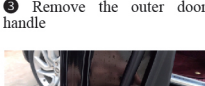
3 Remove the outer door handle



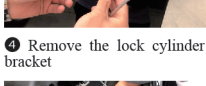
4 Remove the lock cylinder bracket



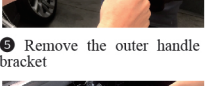
5 Remove the outer handle bracket



6 Remove the door lock

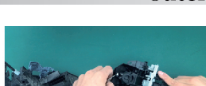


7 Unplug the original lock cable

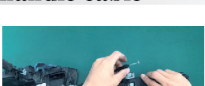


8 Take out the original lock block and outer handle bracket

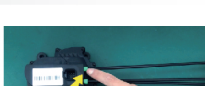
Step 3 Install electric suction lock key cable and outer handle cable



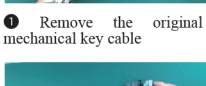
1 Remove the original mechanical key cable



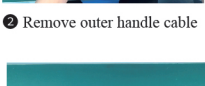
2 Remove outer handle cable



3 Recognize the mechanical key cable of electric lock



4 Install electric suction lock key cable



5 Install the outer handle cable

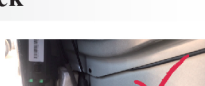
Step 4 Install electric suction lock



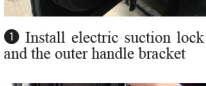
1 Install electric suction lock and the outer handle bracket



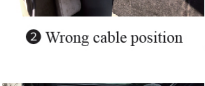
2 Wrong cable position



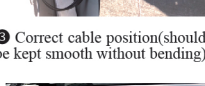
3 Correct cable position (should be kept smooth without bending)



4 Fixed electric suction door lock



5 Install the outer handle bracket



6 Fix the handle bracket and install the lock cylinder bracket



7 Install the handle



8 Install the lock core



9 Tighten the lock cylinder set screw

Step 5 Connect the wiring harness



Note: The wiring harness should be installed according to the front, back, left and right.



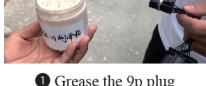
1 Grease the 9p plug



2 Connect 9p plug and electric suction lock



3



4 Restore sound insulation board



5 Plug into the central locking plug



6 Paste soundproof cotton plug



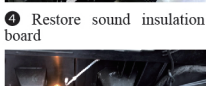
7 Turn off the ignition switch, test the 12v power supply



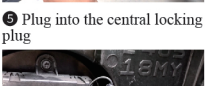
8 Connect the positive and negative poles of the power supply.



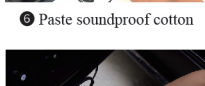
9 Connect the control box



10 Find a suitable location to fix the control box (Note: it should be fixed between the dustproof plate and the inner door plate, not on the outermost sheet iron door plate)



11 Arrange the wiring harness



12 Test suction door system function

Step 6 Fully restored trim panel and spare parts



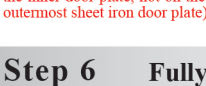
1 Connect inner handle cable



2 Connect the original vehicle harness



3 Install the interior trim panel



4



5 After installation, close the handle to the first-level lock, test the pull-in, test the central lock and door-related functions, such as glass lifter, keyless entry, etc.



6