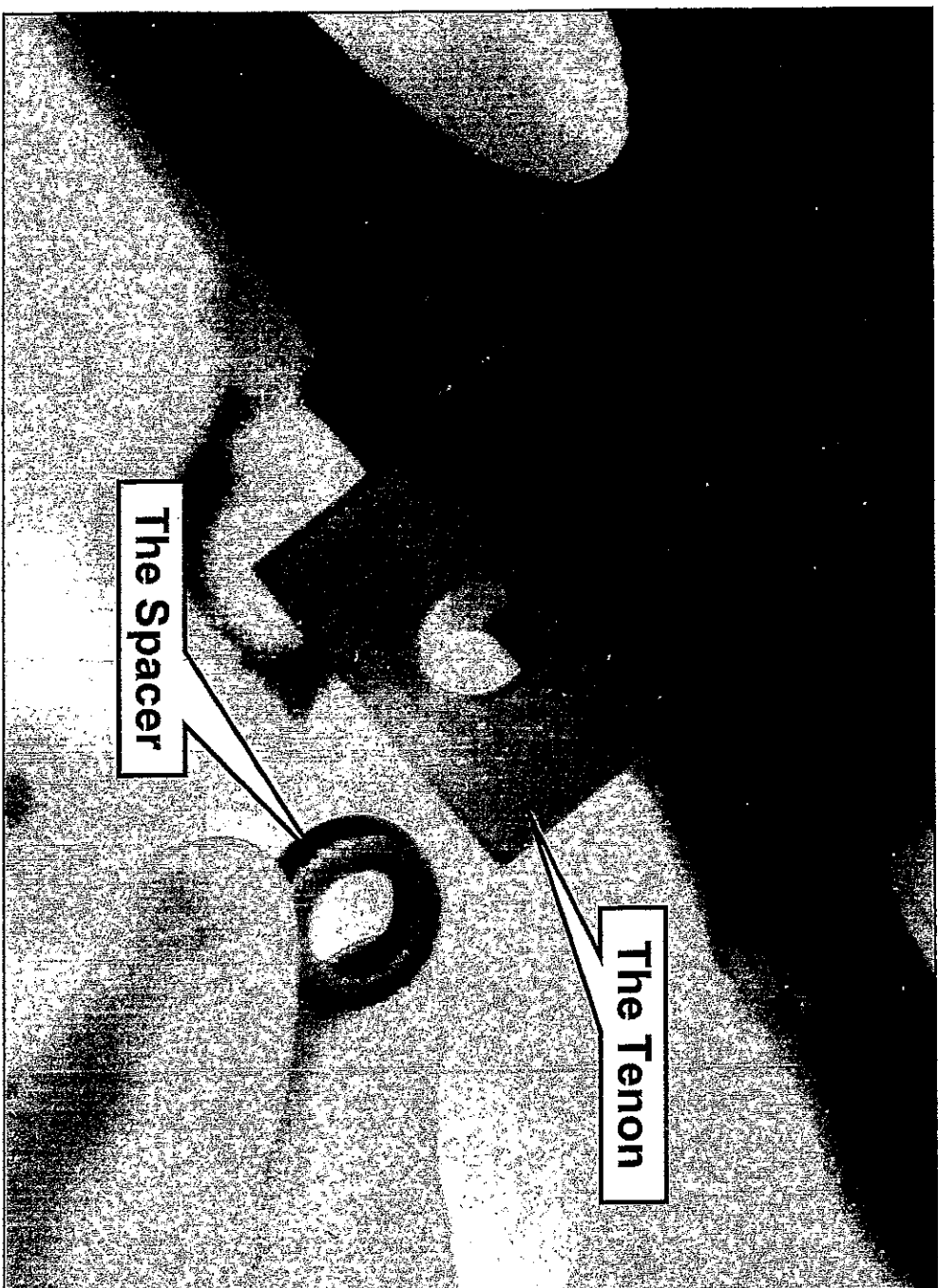


## Instructions of Audi 80 '91 HeadLamp (HU196E-02-1-E)



**Attachments: 8 pcs for 2 mm spacers & 8 pcs for 3 mm spacers.**

**The spacers in the attachments are being substituted for the active tenon of OEM in this product.**

**Please add the spacers in the back of the tenon to joint the adjustment according to the actual assembling.**



寓陽實業有限公司  
JUN YAN AUTO INDUSTRIAL CO., LTD.

總公司:台南市704文成路121號

HEAD OFFICE: 121, Wen-cheng Road, 704, Tainan, Taiwan

TEL: +886-6-2833866 TEL: +886-6-2812356

FAX: +886-6-2812359

E-MAIL: junyan.auto@msa.hinet.net

## Instructions For Electric Adjustment Motor & Manual Adjustment

### Definition:

E: It stands for using "original levelling motor" (OE motor).

EM: It stands for using "manual adjustment apparatus".

E1: It stands for using "JUN YAN electric adjustment motor"

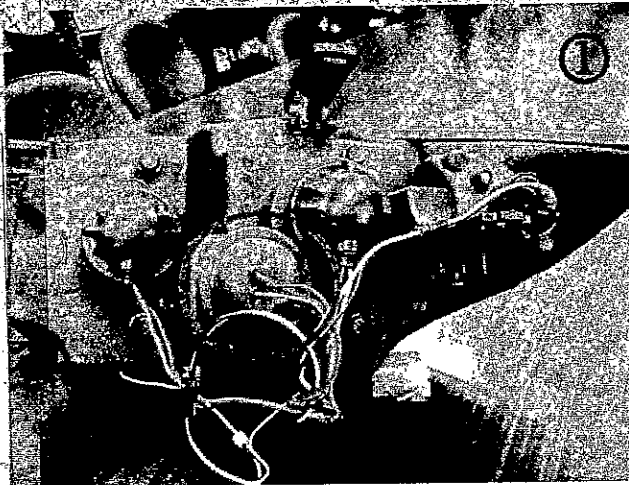
### For instance:

HU258E-00-1-E → Install "OE motor" and adjust up and down of Hi/Low beam.

HU341EM-02-1-E → Adjust up and down of Hi/Low beam by manual bolt.

HU353E1-02-1-E → Adjust up and down of Hi/Low beam by JUN YAN electric motor.

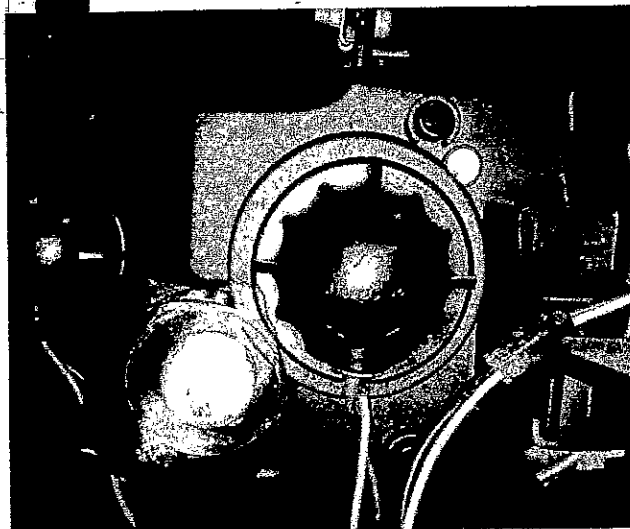
### Situation I - Instruction for installing "OE motor" onto JUN YAN head light.



Example: HU258E-00-1-E

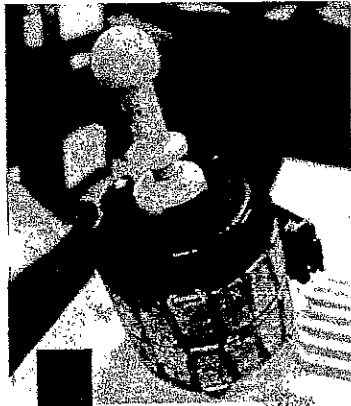
Picture 1:

Remove rubber cap from the levelling adjustment position.



Picture 2:

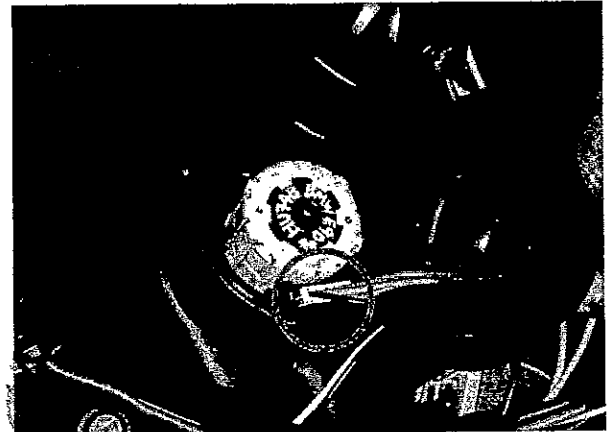
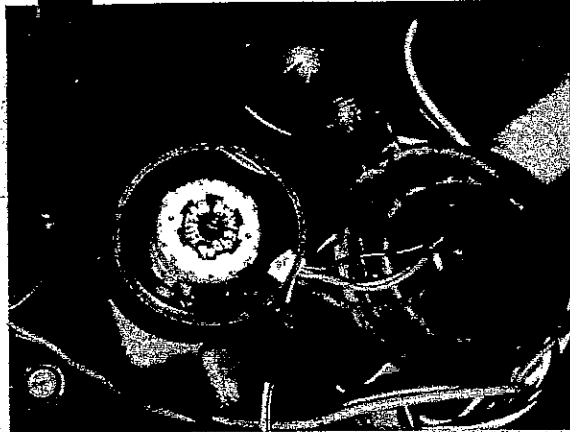
Loose JUN YAN manual adjustment apparatus (bolt).



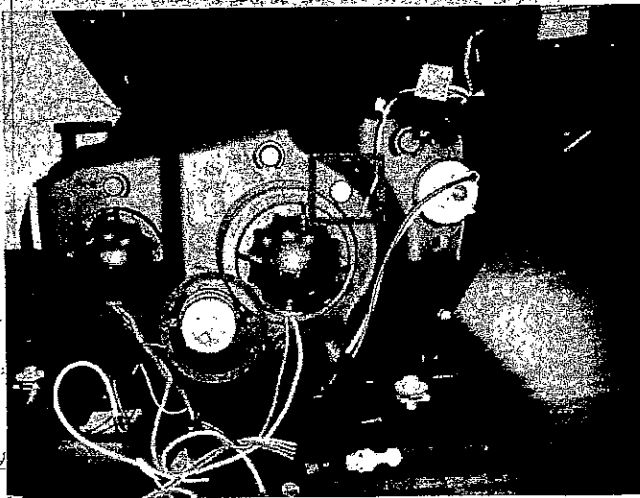
Picture 3:  
OE electric adjustment motor

Picture 4:  
Install OE electric adjustment motor into socket hole.

Picture 5:  
Connect wires to power up the motor, then cover back the rubber cap.



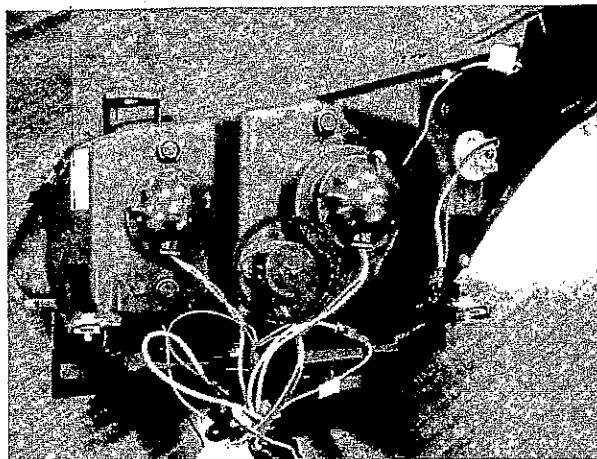
**Situation II - Hi/Low beam adjustment by manual bolt.**



Example: HU341EM-02-1-E

The circle in picture on the left, there is one bolt that you can adjust up and down for the lighting angle and, in the meanwhile, adjustment screw in the square which is to adjust left and right. With two adjustment bolt and screw, you can adjust lighting angle aiming at the road properly.

**Situation III - Hi/Low beam adjustment by JUN YAN electric adjustment motor.**



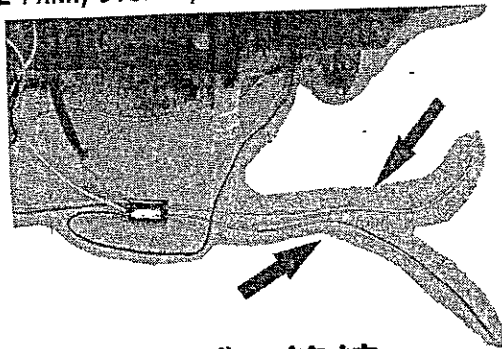
Example: HU353E1-02-1-E

When you buy "E1" type JUN YAN head lamp, the electric adjustment motor is basically equipped onto the head lamp already, so you can simply install the head lamp in car and adjust the lighting angle in the car as you need.

# WIRE HARNESS INSTRUCTION

## ハーネスの接続ご案内

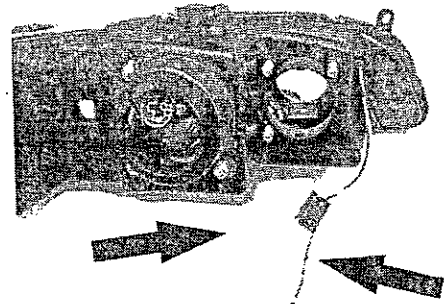
CONNECT THE BLACK LINE TO THE NEGATIVE OF THE PARK/SIGNAL/ SIDE MARKER LAMP.



### リングの接続

黒い線 スモール/マイナスに接続して下さい  
 白い線 スモール/プラスに接続して下さい

PULL OUT THE BULB AND CHANGE THE NEW ONE  
 (BULB TYPE: 13.5V/0.27W)



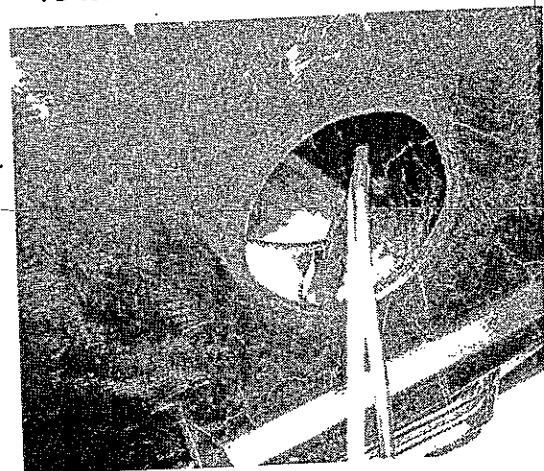
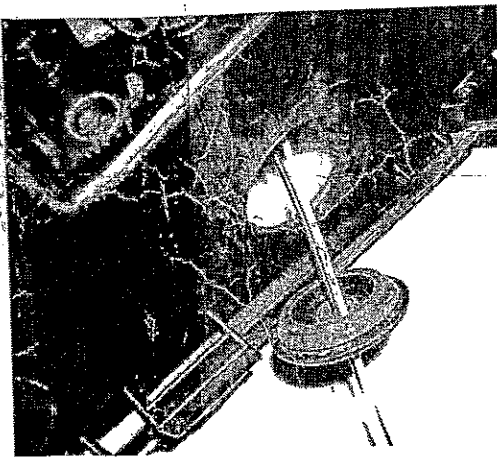
### スモールの接続

黒い線 スモール/マイナスに接続して下さい  
 白い線 スモール/プラスに接続して下さい

REMOVE THE RUBBER COVER AND UNLOCK THE SOCKET OF THE HALO-RING.

FOLLOW THE INSTRUCTION AND CONNECT THE WIRE

LOCK THE SOCKET BACK AND PUT BACK THE RUBBER COVER. (AVOID THE LEAKING, MAKE SURE THE COVER IS ASSEMBLED STEADILY).

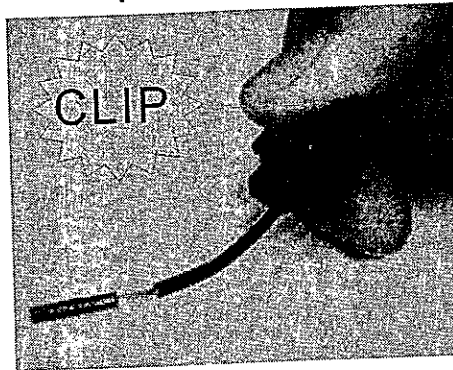
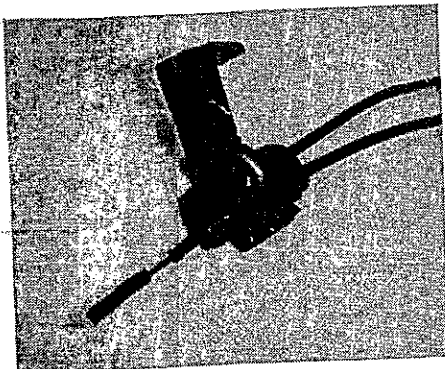


ゴムカバーを取り下ろして下さい。この中のソケットを抜き取ってください。

LED を接続する時に、図面の+、-の指示通りに接続してください

ソケットを確実に元の位置に装着して、ゴムカバーを覆ってください。水漏れの防止完璧

How to connect the wire with the clip, open the clip put the connect wire into the clip, then close the clip then force it till the clip cover steadily.



クリップ装着の説明です。

まずクリップをオープンして図面-のように電線の中に差し込んで、手かツールでガツチャとする音までちゃんとクリップを止めて下さい