



窩陽實業有限公司  
JUN YAN AUTO INDUSTRIAL CO., LTD.

總公司:台南市704文成路121號

HEAD OFFICE: 121, Wen-cheng Road, 704, Tainan, Taiwan

TEL: +886-6-2833866 TEL: +886-6-2812356

FAX: +886-6-2812359

E-MAIL: junyan.auto@msa.hinet.net

## Instructions For Electric Adjustment Motor & Manual Adjustment

### Definition:

E: It stands for using "original levelling motor" (OE motor).

EM: It stands for using "manual adjustment apparatus".

E1: It stands for using "JUN YAN electric adjustment motor"

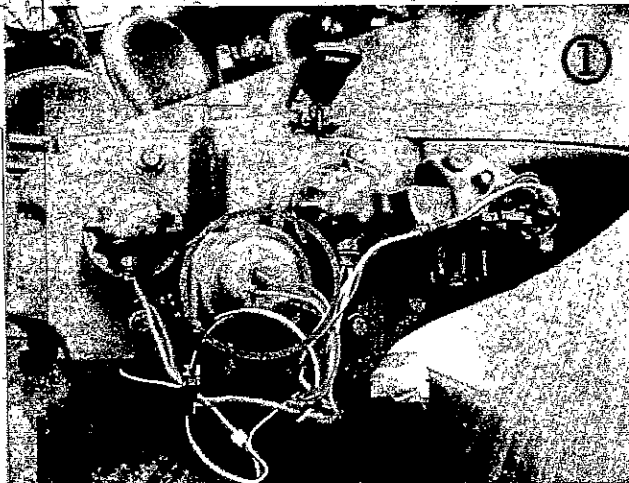
### For instance:

HU258E-00-1-E → Install "OE motor" and adjust up and down of Hi/Low beam.

HU341EM-02-1-E → Adjust up and down of Hi/Low beam by manual bolt.

HU353E1-02-1-E → Adjust up and down of Hi/Low beam by JUN YAN electric motor.

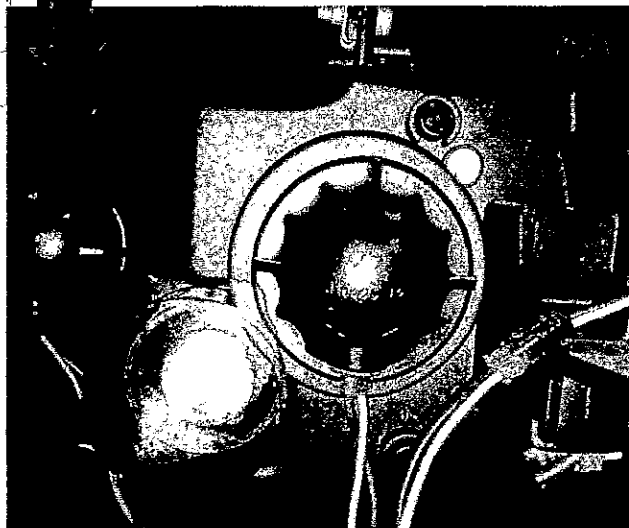
### Situation I - Instruction for installing "OE motor" onto JUN YAN head light.



Example: HU258E-00-1-E

Picture 1:

Remove rubber cap from the levelling adjustment position.



Picture 2:

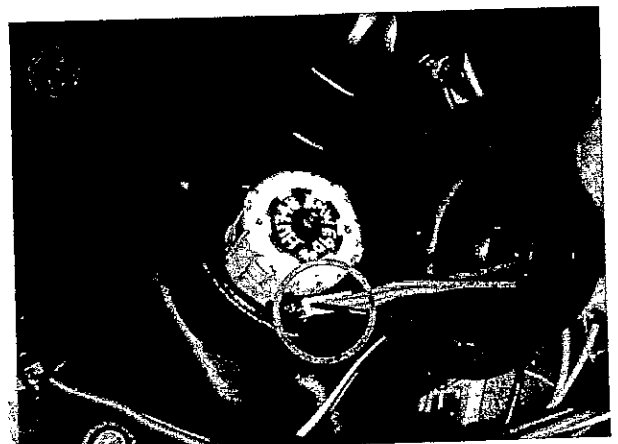
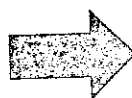
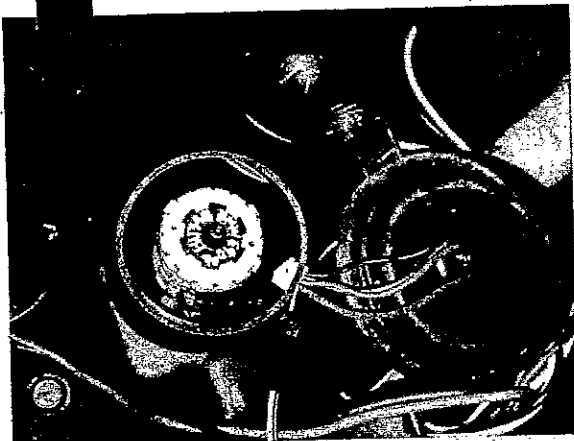
Loose JUN YAN manual adjustment apparatus (bolt).



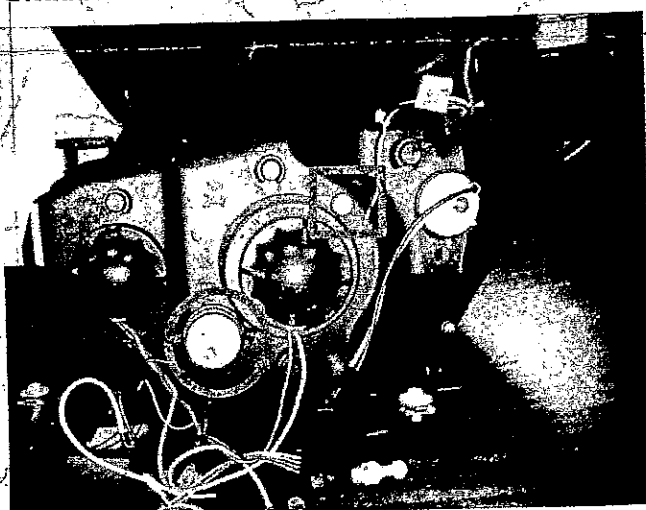
Picture 3:  
OE electric adjustment motor

Picture 4:  
Install OE electric adjustment motor into socket hole.

Picture 5:  
Connect wires to power up the motor, then cover back the rubber cap.



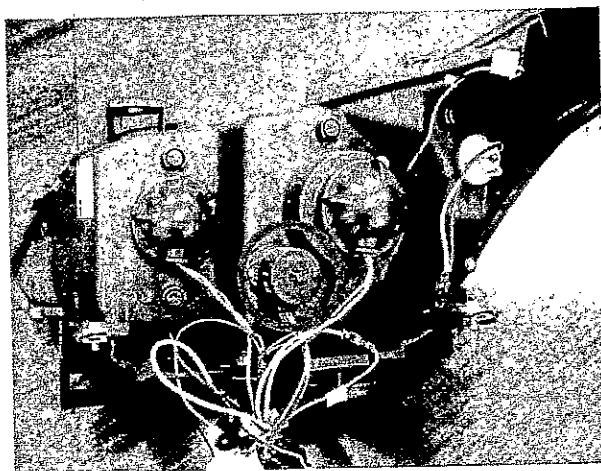
### Situation II - Hi/Low beam adjustment by manual bolt.



Example: HU341EM-02-1-E

The circle in picture on the left, there is one bolt that you can adjust up and down for the lighting angle and, in the meanwhile, adjustment screw in the square which is to adjust left and right. With two adjustment bolt and screw, you can adjust lighting angle aiming at the road properly.

### Situation III - Hi/Low beam adjustment by JUN YAN electric adjustment motor.



Example: HU353E1-02-1-E

When you buy "E1" type JUN YAN head lamp, the electric adjustment motor is basically equipped onto the head lamp already, so you can simply install the head lamp in car and adjust the lighting angle in the car as you need.