

a. Main driver door disassembly (passenger door disassembly is the same as this step) :



1. Use a pry knife to carefully pry open the inner door handle decorative plate (Figure 1)



2. Use a pry knife to carefully pry open the horn decorative plate (Figure 2)



3. Carefully pry open the decorative bar of the handrail with a pry knife (Figure 3)



4. Use a screwdriver to remove the three fixing screws shown in the red circle in Figure 4.



5. Use a pry knife to carefully pry open the armrest decorative board (Figure 5)



6. Carefully pry open the glass lifter cover with a pry knife (Figure 6)





7. Remove the connecting signal on the back of the glass lifter cover plate (as shown in the red circle in Figure 7)



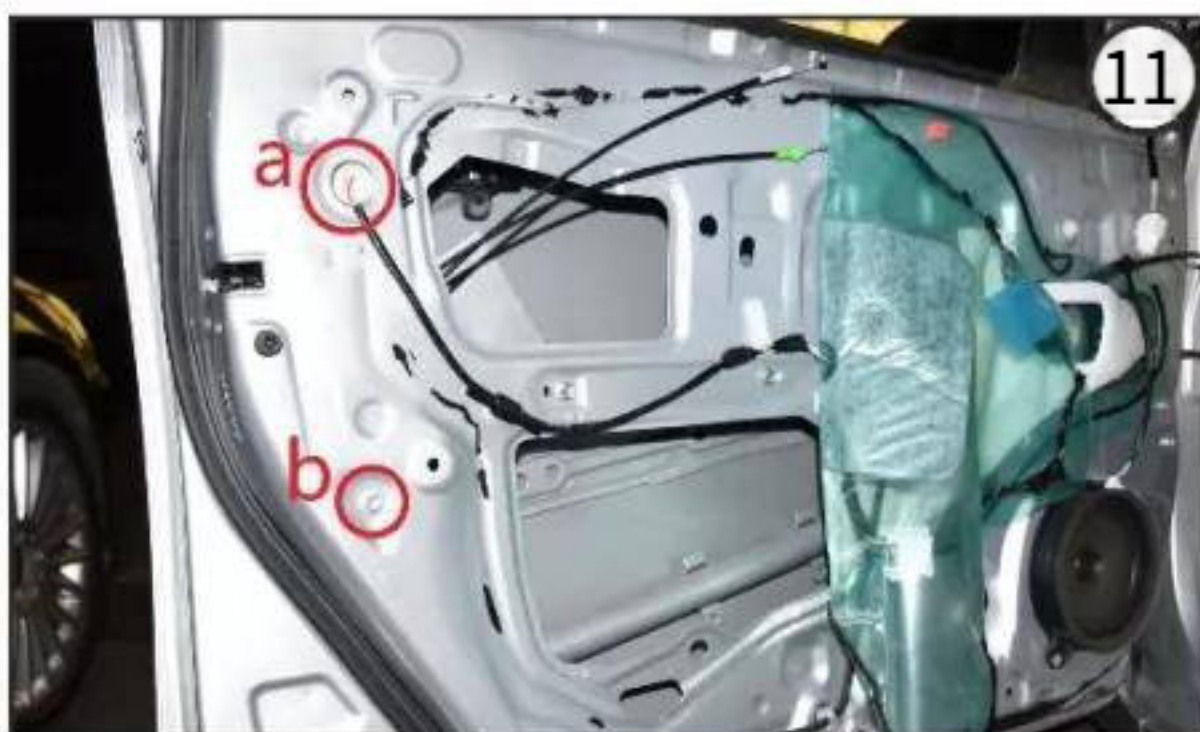
8. Use a pry knife to carefully pry open the peripheral buckle along the edge of the door trim plate, and then remove the door trim plate (FIG. 8)



9. Remove the two cables on the back of the door trim plate (as shown by the red circle in Figure 9)



10. Use a utility knife to carefully mark the soft glue along the edge of the soundproof cotton (Figure 10).



11 Remove the connector plug as shown in the red circle in Figure 11a. Use a 10mm sleeve to remove the fixing screws shown in the red circle in Figure 11b.



12. Remove the three fixing screws as shown in the red circle in Figure 12, and then remove the original lock head.

Note: Please keep the parts, screws and other original items properly; Do not lose it to prevent missing parts during subsequent installation.



b. Remove the left rear door (Remove the right rear door in the same way as this step) :



1. Use a pry knife to carefully pry open the inner door handle decorative plate (FIG. 13) 2. Use a pry knife to carefully pry open the armrest decorative plate (FIG. 14)



3. Carefully pry open the glass lifter cover with a pry knife (Figure 15)

4. Remove the connecting signal on the back of the glass lifter cover (as shown in the red circle in Figure 16)



5. Use a screwdriver to remove the three fixing screws shown in the red circle in Figure 17.

6. Use a pry knife to carefully pry open the peripheral buckle along the edge of the door trim plate, and then remove the door trim plate (FIG. 18)

Note: Please keep the parts, screws and other original items properly; Do not lose it to prevent missing parts during subsequent installation.





7. Remove the two cables on the back of the door trim plate (as shown by the red circle in Figure 19)



8. Use a utility knife to carefully mark the soft adhesive along the edge of the soundproof cotton (Figure 20).



9 Remove the connector plug (shown in the red circle in Figure 11).

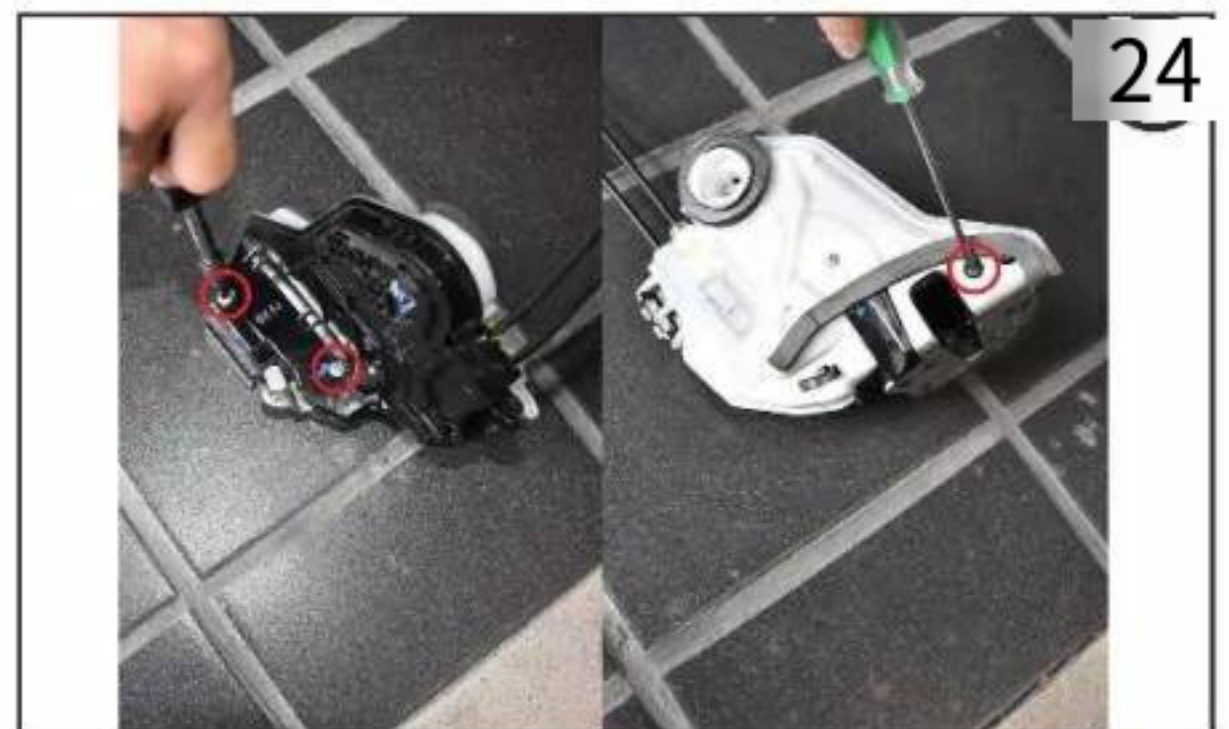


10. Remove the three fixing screws as shown in the red circle in Figure 22, and then remove the original lock head.

c. Installation of electric suction door components (the installation steps of the four electric suction door lock core components are the same) :



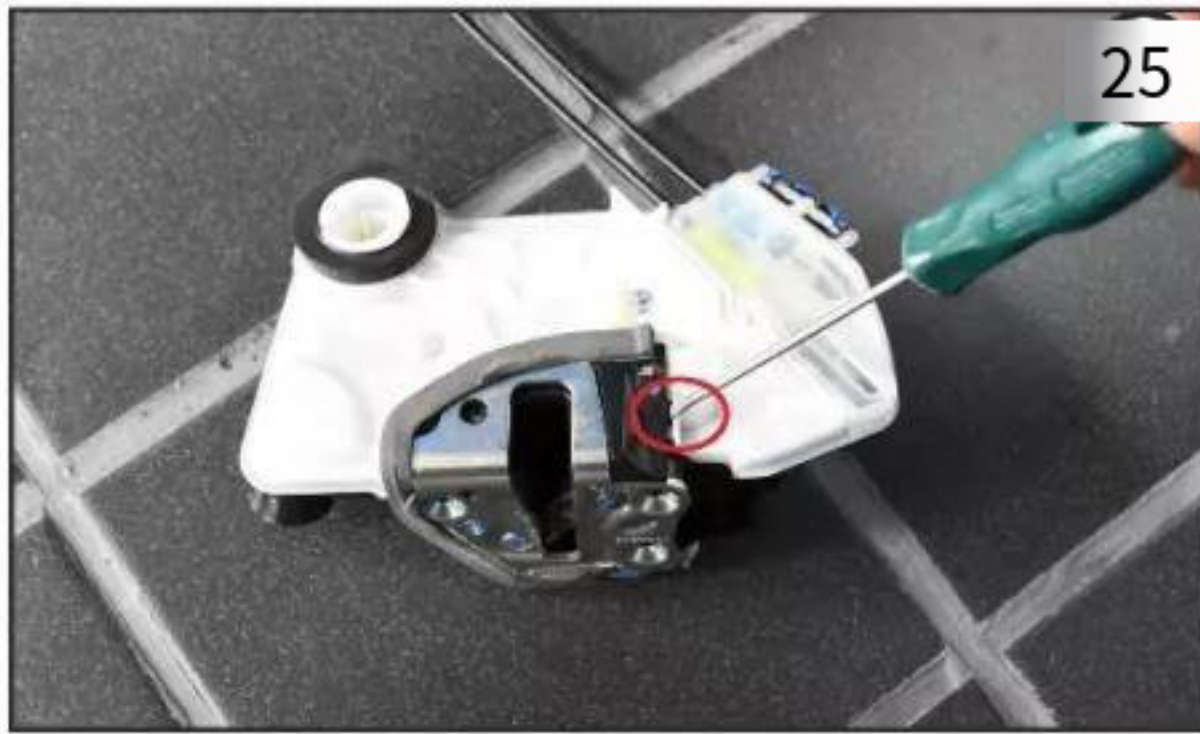
1. Remove the door lock from inside the car door (Picture 23)



2. Remove the three fixing screws of the lock core (as shown in the red circle in Figure 24)

Note: Please keep the parts, screws and other original items properly; Do not lose it to prevent missing parts during subsequent installation.





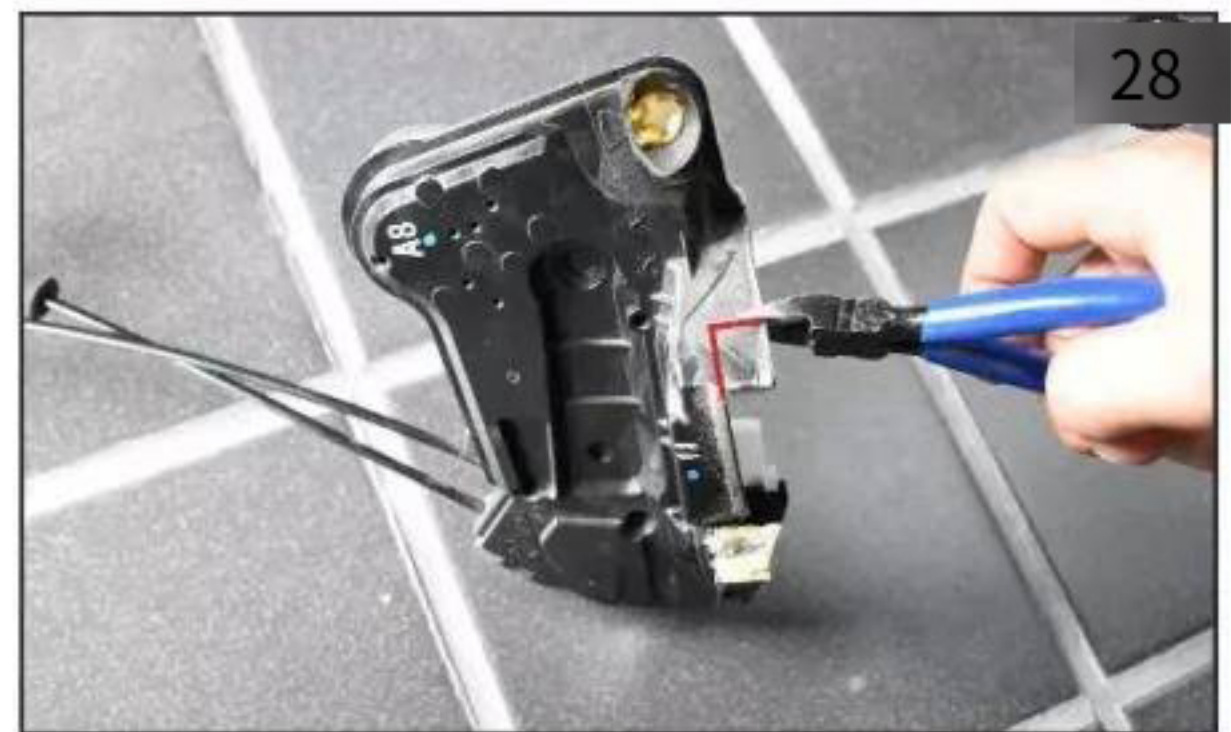
3. Use a pry knife to pry open the lock core of the original car as shown in the red circle in Figure 25.



4. Remove the original lock core (Figure 26).



5. Take out the core assembly of the electric suction door lock, put part of the lock core on the car door lock (Figure 27), and record the approximate position of the cable of the electric suction door lock core (as shown in the red circle in Figure 27).



6. Use cutting pliers to cut off the plastic of the door lock at the position of the mark line in Figure 27 (as shown in Figure 28).



7. Install the electric suction door lock core on the original car door lock (Figure 29)

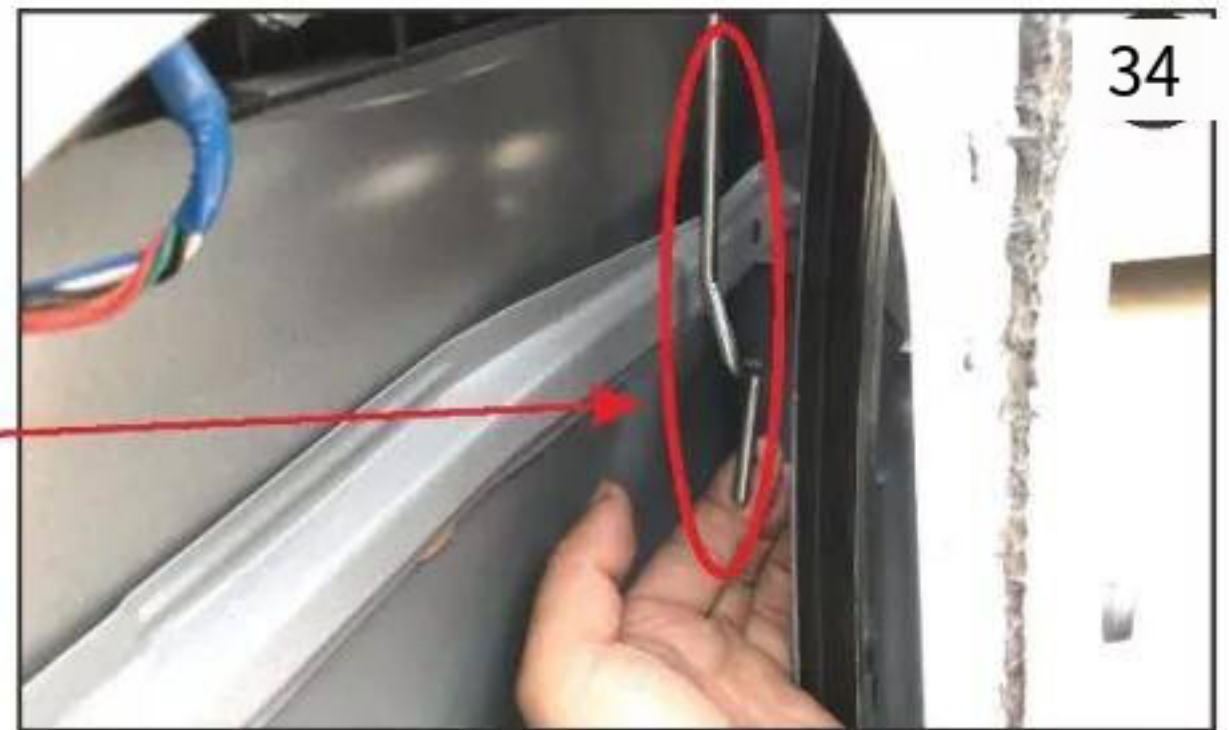


8. Fix the electric suction lock core with the 3 fixing screws of the original lock core (as shown in the red circle in Figure 30)

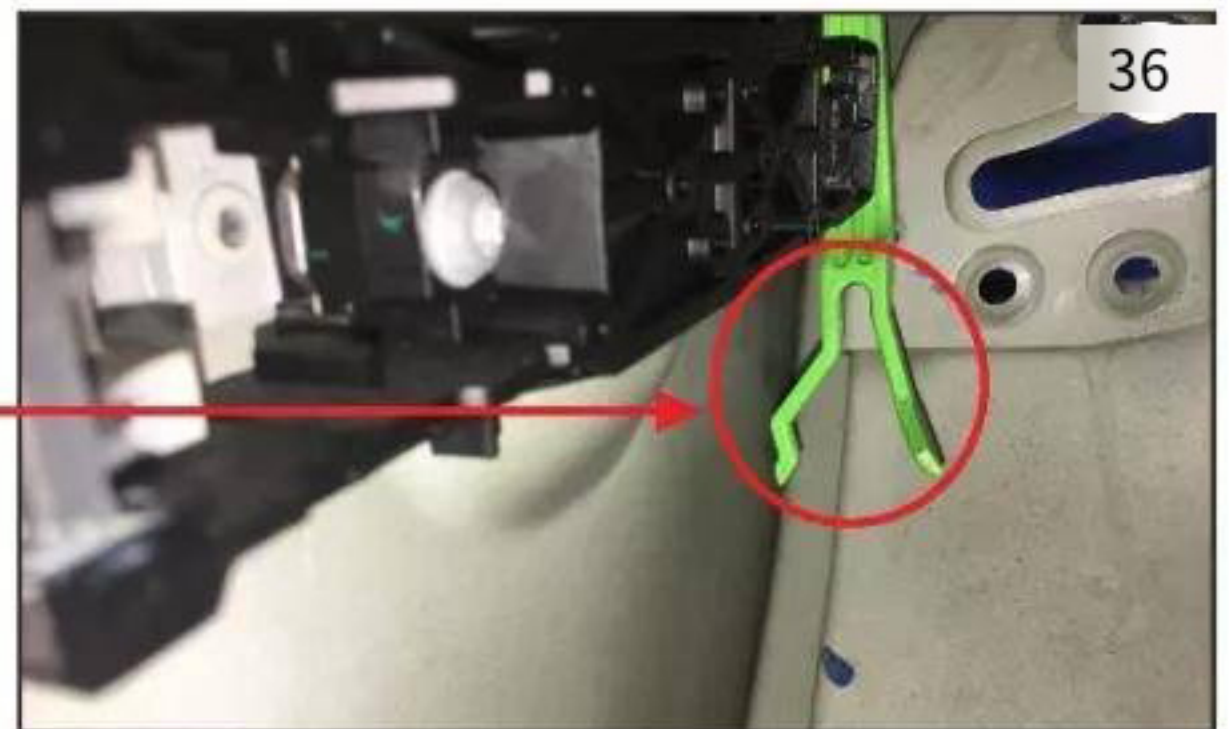




9. Align the mechanical lock latch of the main driving door (Figure 32) with the emergency door opening hole on the lock head and install it in the position shown in the red circle in Figure 31.



10 Connect the core card hole of the electric suction door lock (as shown in the red circle in Figure 33) with the connecting rod of the original car (Figure 34). Note: This step is the installation of the front door lock



11 Align the unlocking arm of the outer door handle (shown in the red circle in Figure 35) with the unlocking mechanism on the lock (shown in the red circle in Figure 36), and secure the lock. Note: This step is for the rear door lock installation

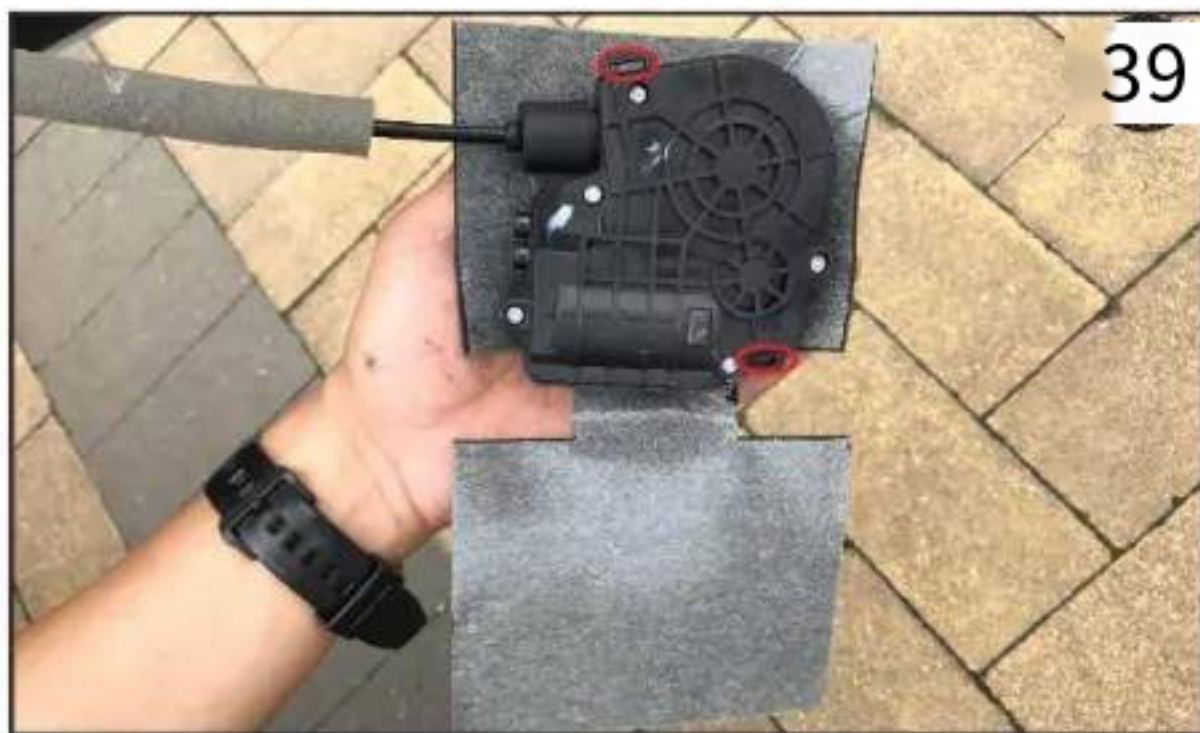




12 Fix the door lock with the three lock fixing screws of the original car, and then switch the lock core to the locked state with a screwdriver (Figure 37).



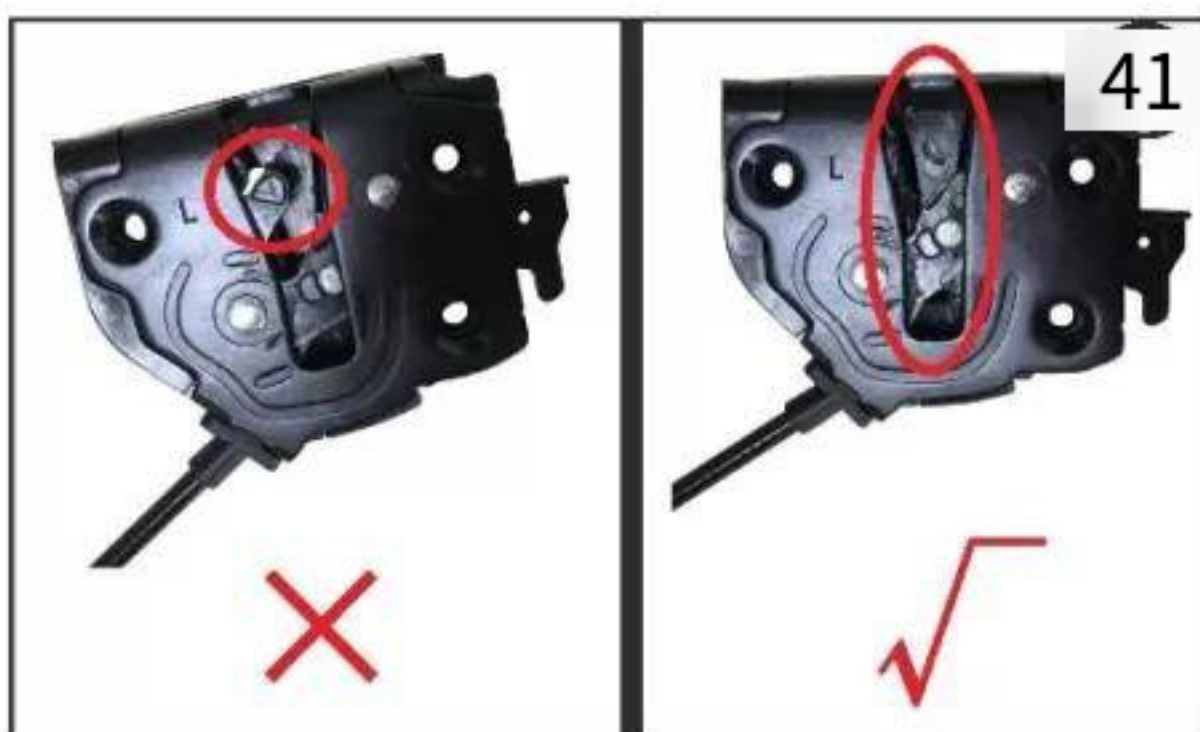
13. Pull the door handle and check whether the lock core bounces back to open. If it bounces back, proceed with the following steps. If it does not bounce back, check the previous steps and reinstall it. (Figure 38)



14 Take out the sponge in the accessory, tear the adhesive paper on the back of the sponge, and wrap the sponge around the motor box (Figure 39).



15. Take out the two cable ties and pass them through the card holes in the motor box, as shown in Figure 40 (the card holes are in the positions shown in the red circle in Figure 39).



16. Smooth the pull lock, rotate the motor box, turn it forward or reverse, so that the lock is fully retracted into the lock core (as shown in Figure 41).



17. Fix the motor box with cable ties in the position of the red circle as shown in Figure 42, and cut off the excess cable ties. Note: This step is the installation location of the front door motor box.





18 Fix the motor box with cable ties in the position of the red circle as shown in Figure 43, and cut off the excess cable ties.

Note: This step is for the rear door motor box installation location.

#### d. Wiring of electric suction door:



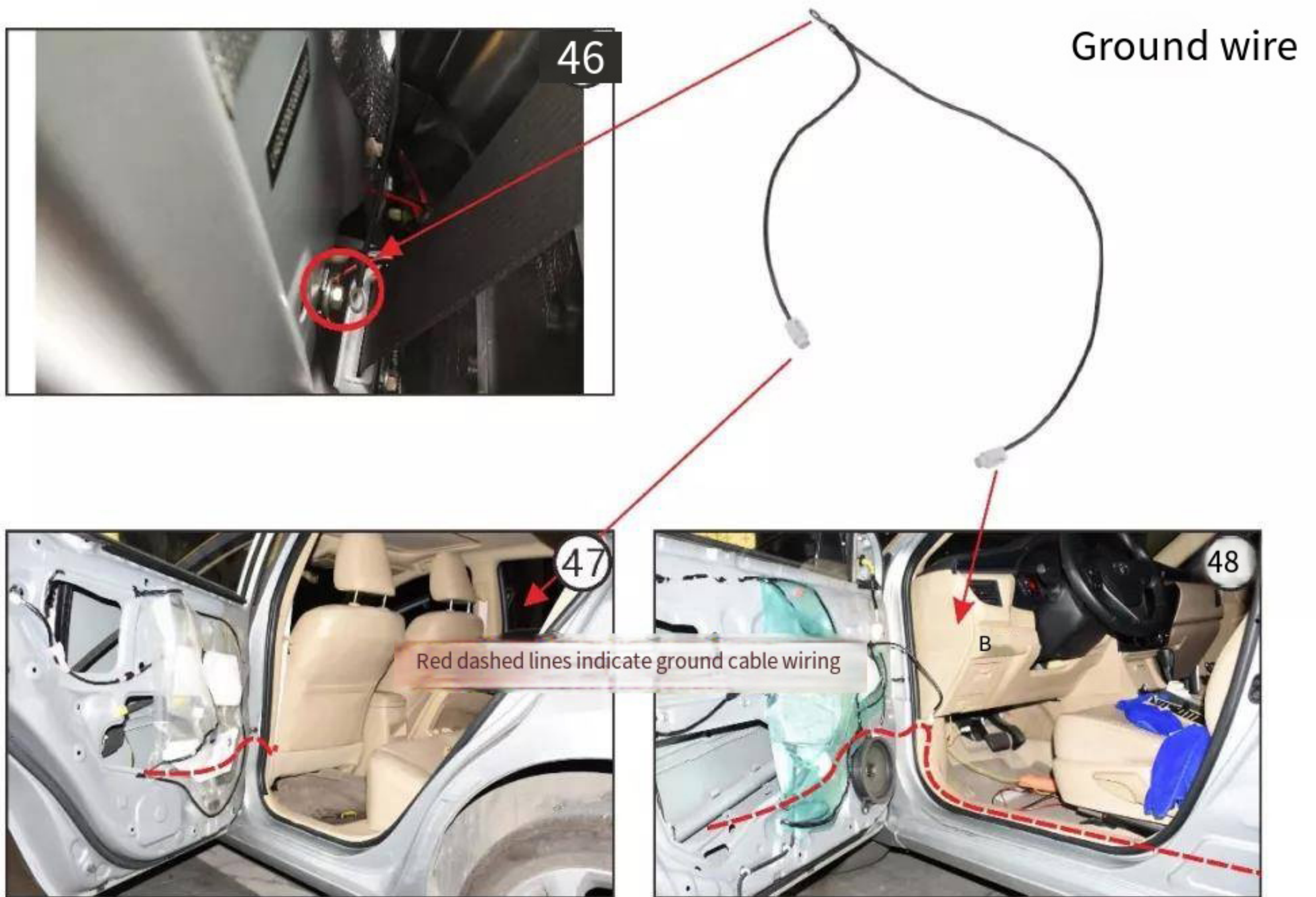
1. Use a pry knife to carefully pry open the welcome pedal at the left/right front door (Figure 44)



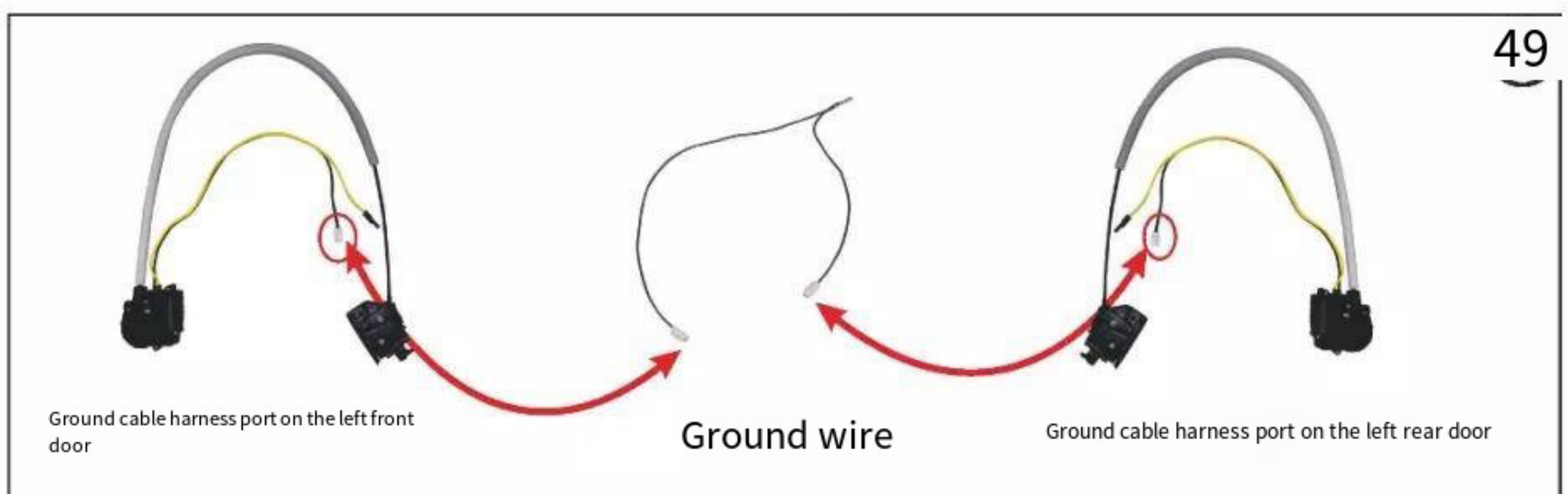
2. Use a pry knife to carefully pry open the left/right B-pillar decorative plate (FIG. 45)



d-1. Route the ground cable on the left side as follows (the route on the right side is the same) :



1 Take out a ground cable of the fitting, and install the round end of the ground cable on the screw at the lower side of the left B pillar (the right front/rear door is the right B pillar) (as shown in the red circle in Figure 46). Route the short end of the ground cable harness through the corrugated pipe at the left rear door to the left rear door as shown in dotted line in Figure 47. Route the other end through the welcome pedal of the main driver as shown in dotted line in Figure 48, and route the ground cable through the corrugated pipe at the left front door to the left front door.



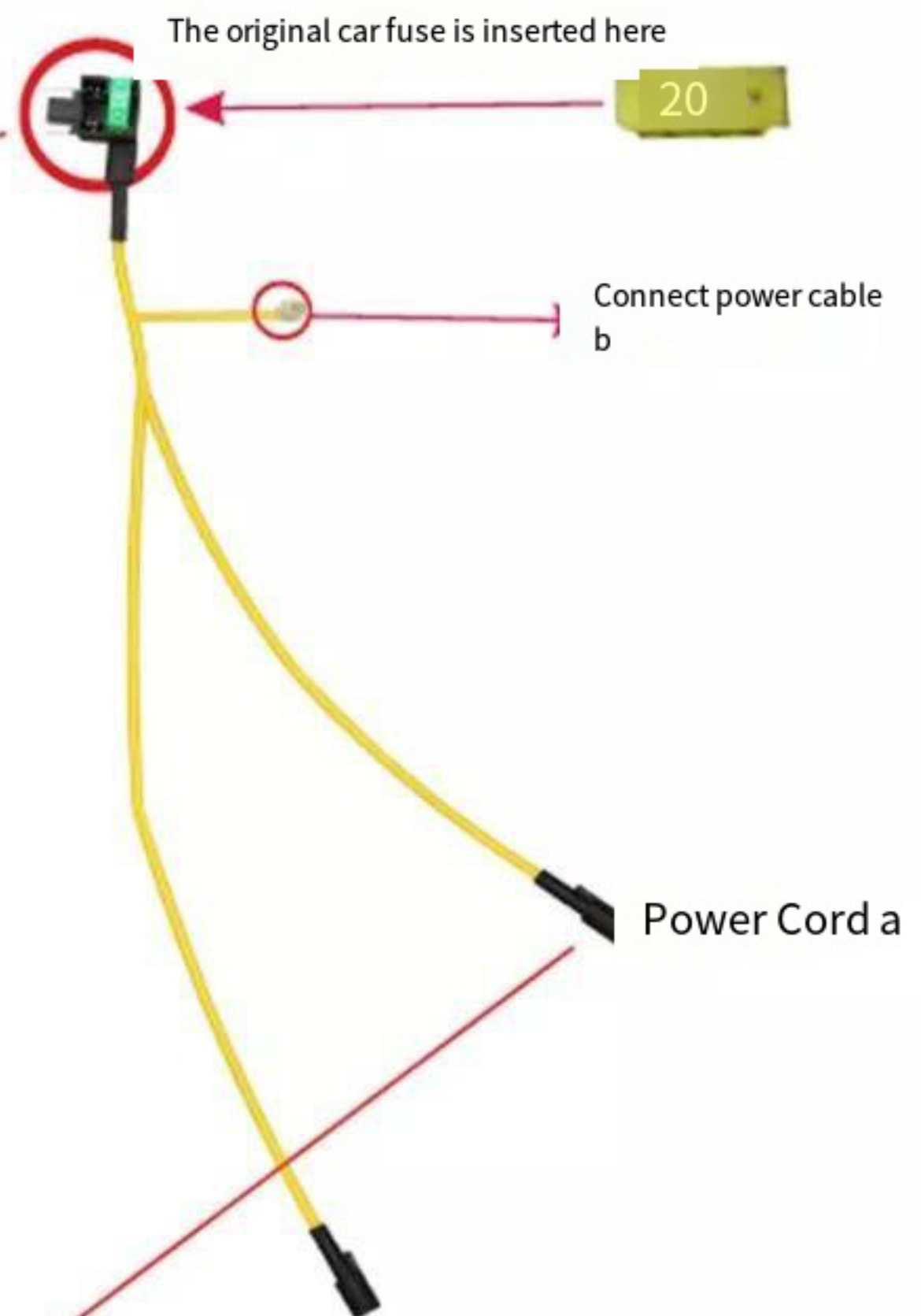
2. After routing the ground cable, connect the port to the upper port of the motor box, as shown in Figure 49.



d-2. Route power cables for the left front door and left rear door, as follows:



1. Take out the power harness of the accessory, pull out and insert the original car fuse 20A on the seat of the accessory power cord a, and then insert the socket end of the power cord a into the original car fuse (as shown in the red circle in Figure 50).

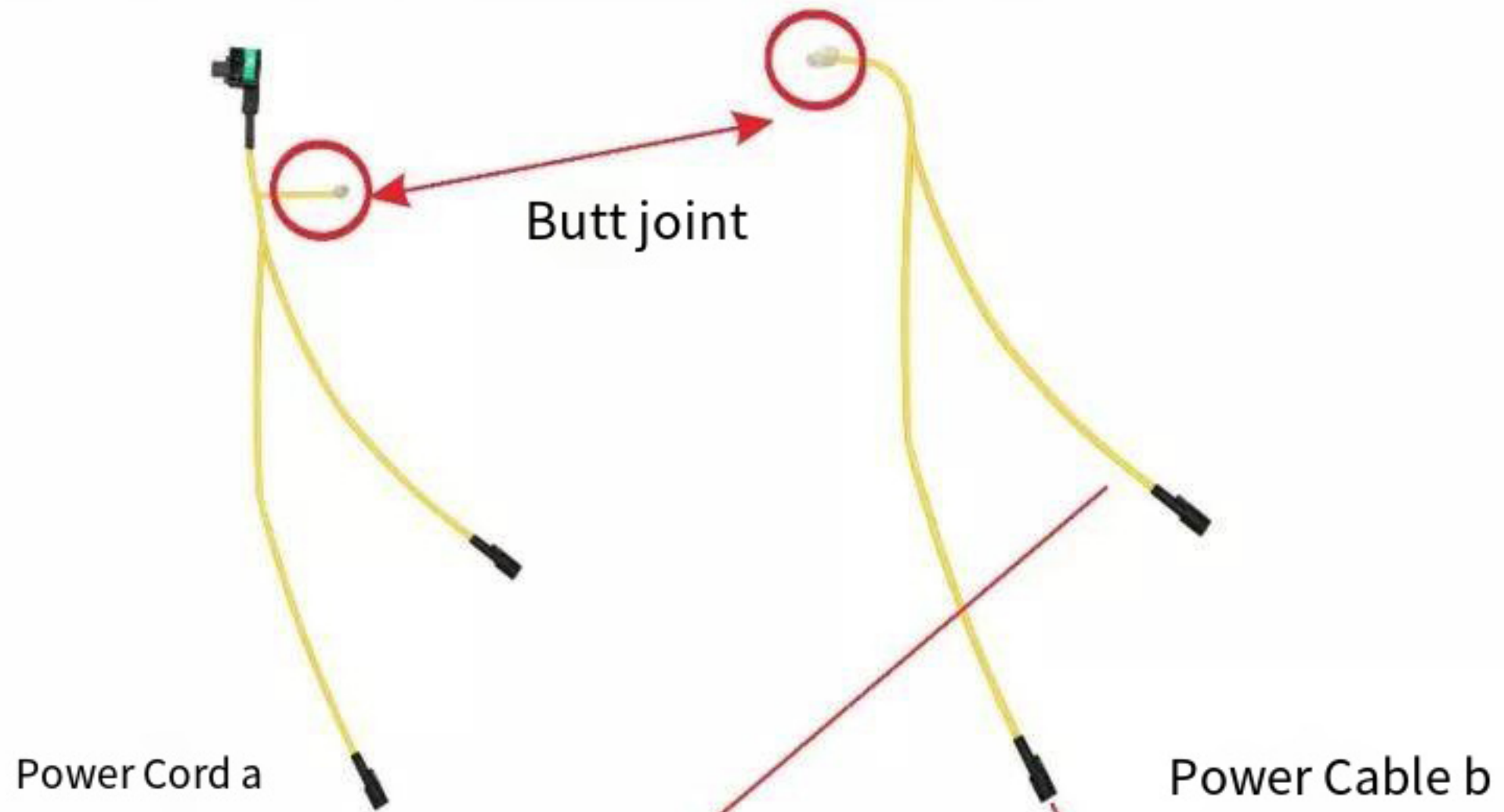


2. Route the short end of power cable a through the corrugated pipe on the left front door to the left front door, as shown in dotted line in Figure 51. The other end, as shown in the dashed line in Figure 52, goes through the left front door welcome pedal to the B-pillar, and then through the left rear door bellows wiring to the rear door.

Note: If there is no power after the power harness jack is inserted into the fuse box, insert the port backwards into the fuse box; If you need to remove the original car fuse, install the removed fuse to the free position of seat a of the power cord of the suction door.

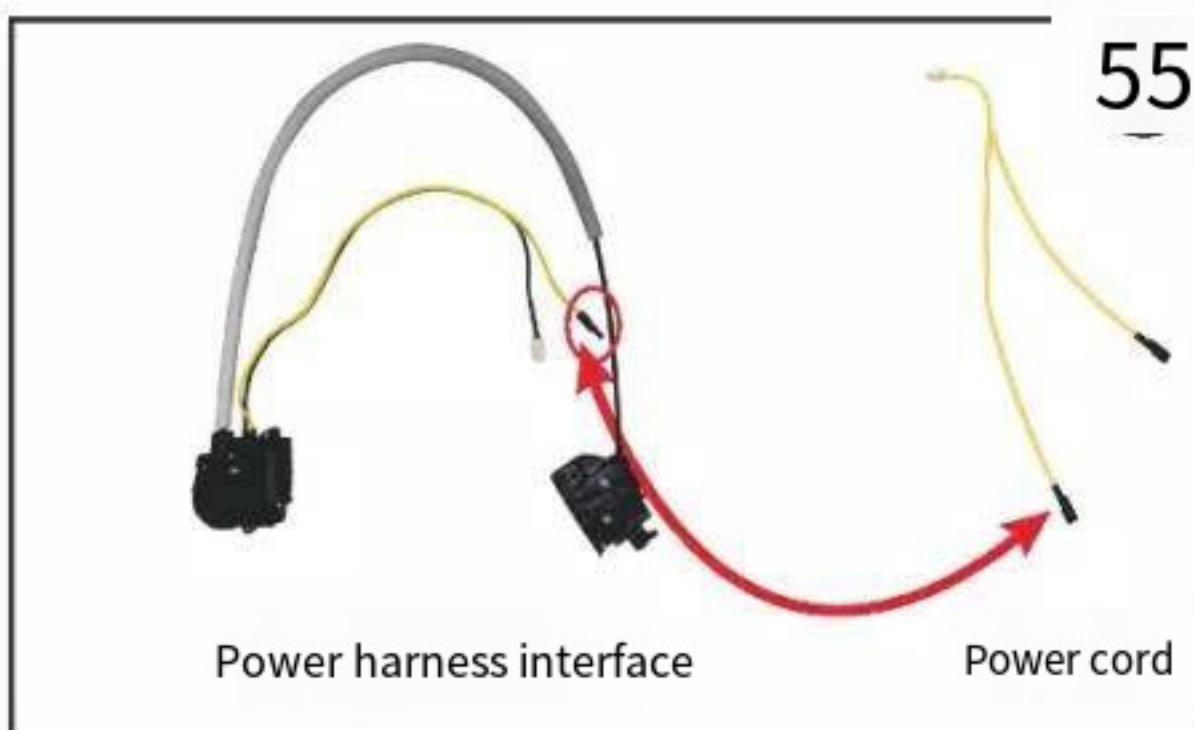


d-3. Route power cables for the right front door and right rear door, as follows:



1. Pry open the decorative panel on the right side of the passenger, take out the power cable b, connect its interface end with the power cable a interface, and pass through the lower part of the center control, inside the glove box to the passenger seat, and pass the short end through the corrugated pipe to the right front door as shown in the yellow dotted line in Figure 53; The other end, as shown in the yellow dotted line in Figure 54, passes through the right front door welcome pedal

B-pillar bellows are routed inside the right rear door.



2. After wiring the power cord, connect the interface to the upper interface of the motor box component (Figure 55).



3. Restore the decorative panels and complete the installation (Figure 56)