

## Hexagon HoneyComb Ceiling Light System

Code ATLO....

---

For Products:

[https://www.carparktuning.com/index.php?cauta=&marca=&models=&cuvchei=Hexagon+&produc=&atego=&show\\_on\\_stock=0](https://www.carparktuning.com/index.php?cauta=&marca=&models=&cuvchei=Hexagon+&produc=&atego=&show_on_stock=0)

To facilitate your installation, please read the product instruction manual carefully before installation.

**CAUTION:** You will need to remove the protective film on light tubes before installation. Please do not assemble it forcefully as it may damage the connectors or malfunction. Test lighting before final installation onto the ceiling. It is recommended to consult with an electrician to ensure your electrical setup is sufficient.



## Hexagon HoneyComb Ceiling Light System

Code ATLO....

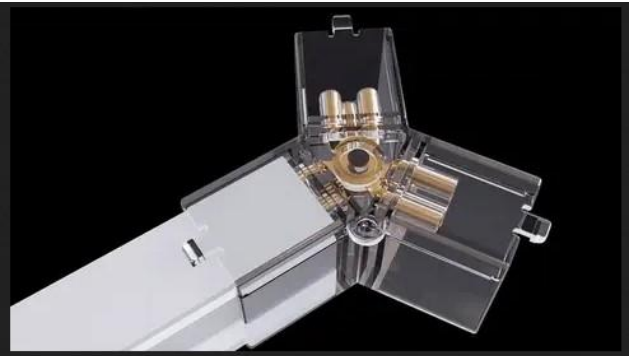
---

**Step 1:** The entire lighting structure should be assembled on the floor before mounting. If your kit includes a border, construct this first. If not, skip to

**Step 3:** Connect the longer lighting tubes with straight and 90-degree connectors to make the border. Make sure tubes are carefully inserted all the way into the connectors.

**Step 2:** Use a T connector at the last corner of the border where a cable will plug into and connect to the power supply.

**Step 3:** Next, construct each hexagon shape into columns by connecting lighting tubes with the elbow and Y connectors to make your desired pattern.



# Hexagon HoneyComb Ceiling Light System

Code ATLO....



## Hexagon HoneyComb Ceiling Light System

Code ATLO....

---



**Step 4:** Place open-end Y connectors outside of hexagons where the cable will plug into and connect to the power supply. The number of cables needed are dependent on the size and amount of lighting tubes (1 cable per 30 tubes). Our standard Hexagon Kits will usually need to have 2 cables connected at opposite corners.



**Step 5:** Connect cables to the 100-240V power supply and test before final ceiling installation. Red: Live / Blue: Neutral / Yellow: Earth Ground. If you are

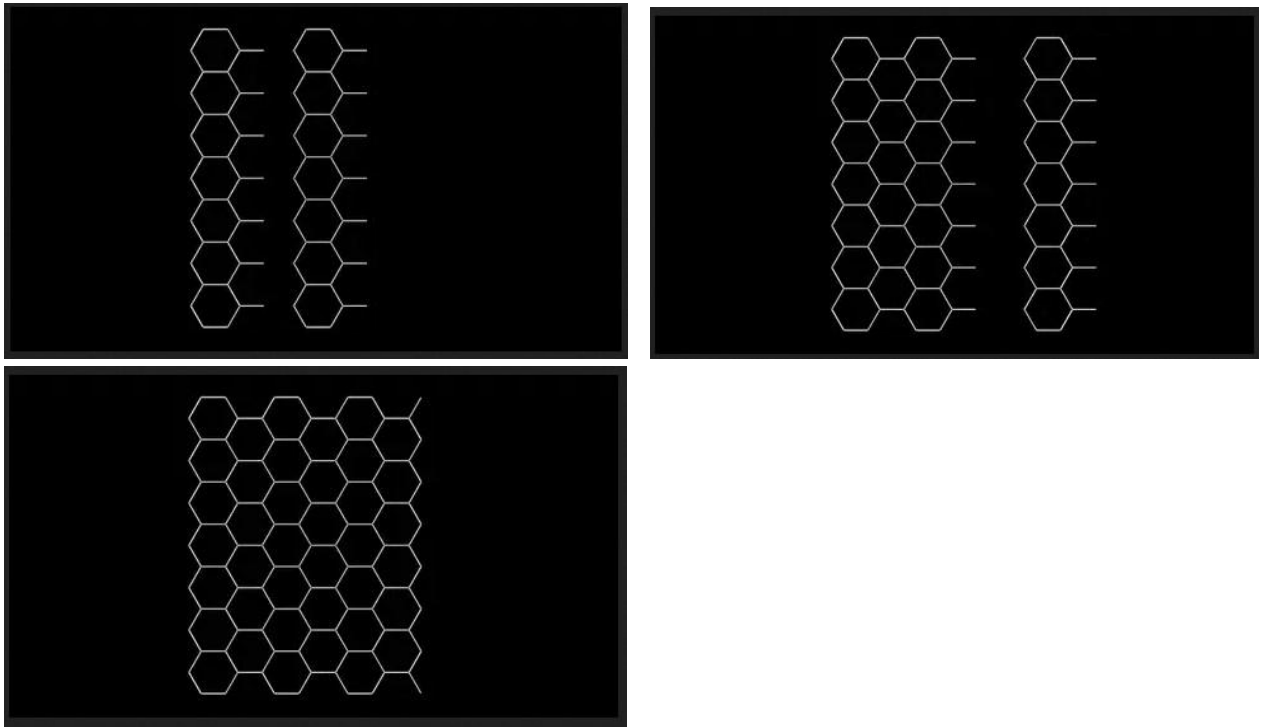
## Hexagon HoneyComb Ceiling Light System

Code ATLO....

---

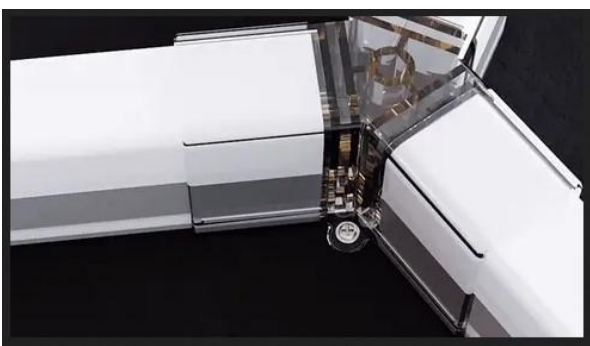
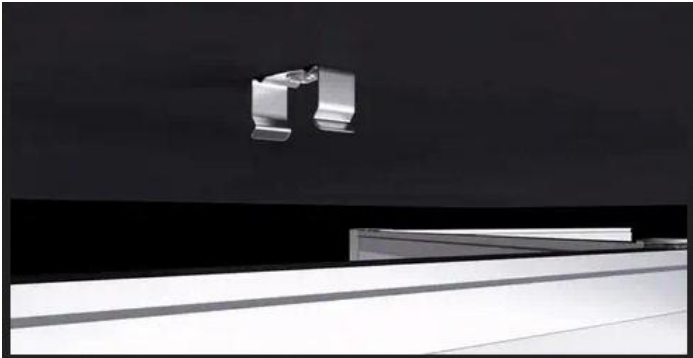
unsure of how to connect to power, we recommend consulting with an electrician before proceeding.

**Step 6:** Raise and install to the ceiling as a whole or in sections. Hang with screws through connector holes (preferred method), suspend with wire, or fasten with zip ties. Connect to the power supply once installed to the ceiling.



# Hexagon HoneyComb Ceiling Light System

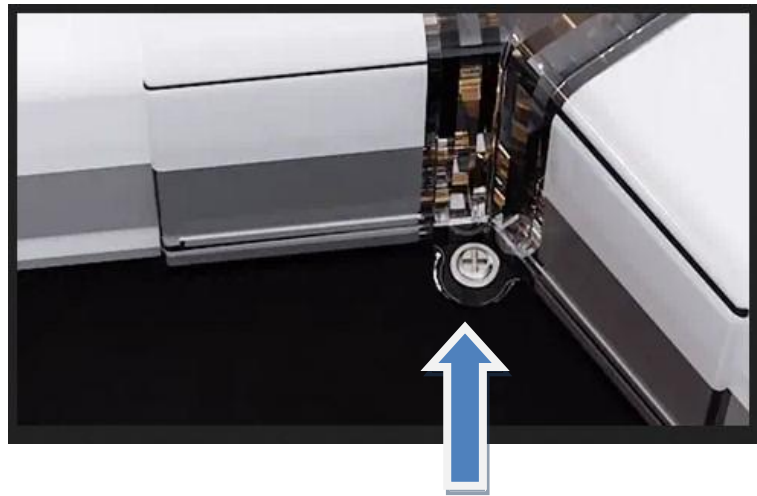
Code ATLO....



# Hexagon HoneyComb Ceiling Light System

Code ATLO....

---



[https://ueeshop.ly200-cdn.com/u\\_file/UPAX/UPAX503/2303/photo/32cebddd834.gif](https://ueeshop.ly200-cdn.com/u_file/UPAX/UPAX503/2303/photo/32cebddd834.gif)

Disclaimer: Our company is not responsible for any related problems and losses caused by improper installation and use.