

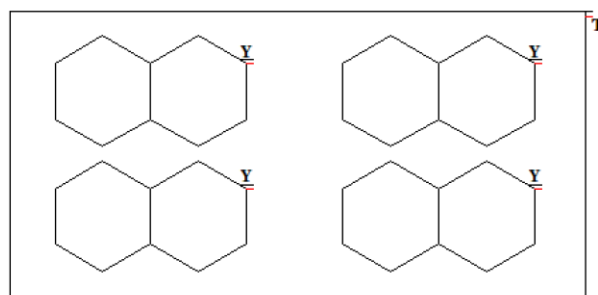
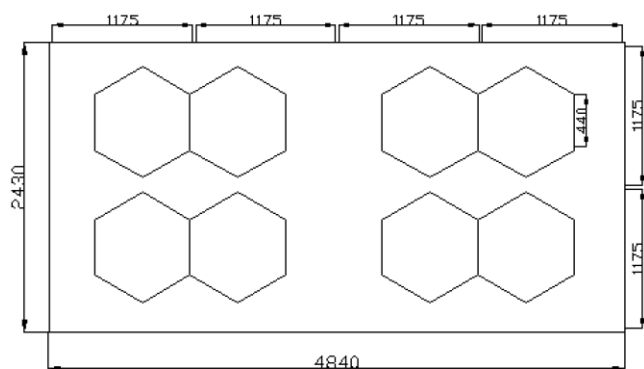
Hexagon LED Lighting Installation

This product is covered by a 2-year warranty.

1.Packing List

NO.	Name		Specifications	Quantity	Spare
1	Light tube	length	440mm	44pcs	1pcs
			1175mm	12pcs	1pcs
2	Connectors	2 way	120°	28pcs	
			180°	8pcs	
			90°	3pcs	
		3 way	120°	12pcs	
		3 way(T)	90°	1pcs	
3	With wire connect to 110-240V			5pcs	use at "Y/T"

2.Circuit Diagram(Please read carefully before installing, otherwise there is a risk of burning out the LED)



Connect in series as shown in the figure, with wire connect to 110-240V

Note: "T" is connected with 3 way "T" connector "Y" is connected with 3 way connector

Test before fixing to the ceiling

Document control category	D a t e	R e v i s i o n
<input checked="" type="checkbox"/> YES / <input type="checkbox"/> NO	2025.3.16	
A p p r o v e	R e v i e w	D r a f t

(must not be altered or photocopied without authorization)

COD PRODUS.:	WI12-GTTL-ATL05	VER:	1	PAGE	1/1

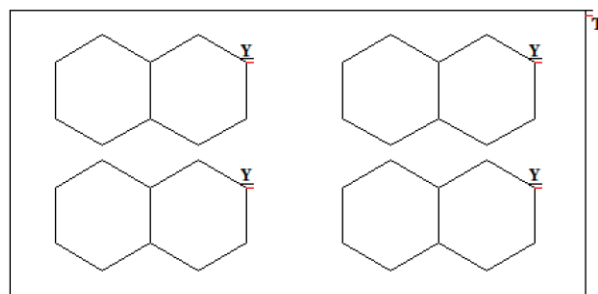
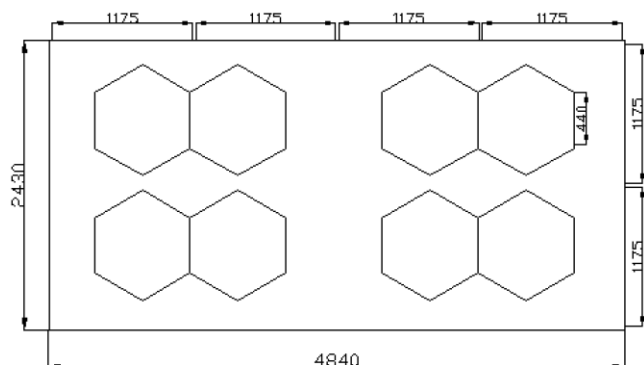
Instructiuni instalare sursa de iluminare Hexagon LED

Produsul beneficiaza de o garantie valabila 2 ani pentru persoane fizice si 1 an pentru persoane juridice.

1.Continut

Nr.	Nume		Specificatii	Cantitate	Rezerva
1	Tub luminos	lungime	440mm	44buc	1 buc
			1175mm	12 buc	1 buc
2	Conectori	2 cai	120°	28 buc	
			180°	8 buc	
			90°	3 buc	
		3 cai	120°	12 buc	
		3 cai (T)	90°	1 buc	
3	Cablul alimentare 110-240V			5 buc	Se foloseste la conectori „Y/T”

2. Schema de montaj a circuitului (Va rugam sa cititi cu atentie inainte de instalare, in caz contrar exista riscul arderii LED - urilor



Conectati piesele in serie, conform diagramei, inclusiv Cablul de alimentare.

Nota: „T” este conectat cu conectorul „T” cu 3 căi „Y” este conectat cu conectorul cu 3 căi

Testati ansamblul, la podea, inainte de fixare pe tavan.

Documente	Data	V e r s i u n e
<input checked="" type="checkbox"/> D A / <input type="checkbox"/> N U	2025.3.16	
Aprobare	Review	Draft

(nu se poate modifica sau copia fara aprobare)

Hexagon HoneyComb Ceiling Light System

Code ATL0....

For Products:

https://www.carparktuning.com/index.php?cauta=&marca=&models=&cuvchei=Hexagon+&produc=&atego=&show_on_stock=0

To facilitate your installation, please read the product instruction manual carefully before installation.

CAUTION: You will need to remove the protective film on light tubes before installation. Please do not assemble it forcefully as it may damage the connectors or malfunction. Test lighting before final installation onto the ceiling. It is recommended to consult with an electrician to ensure your electrical setup is sufficient.

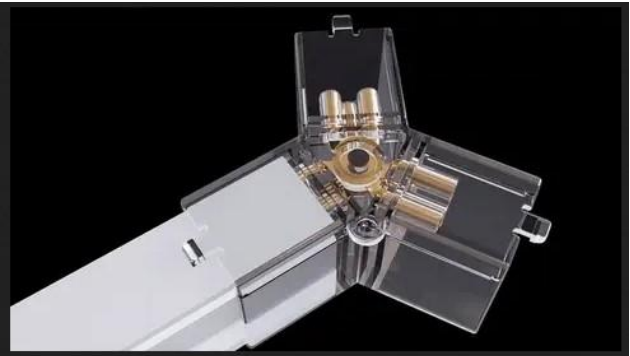


Step 1: The entire lighting structure should be assembled on the floor before mounting. If your kit includes a border, construct this first. If not, skip to

Step 3: Connect the longer lighting tubes with straight and 90-degree connectors to make the border. Make sure tubes are carefully inserted all the way into the connectors.

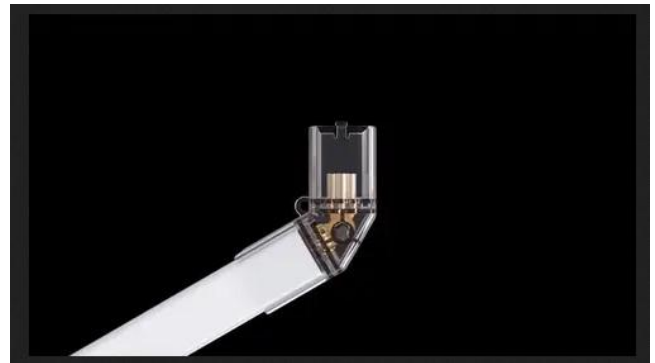
Step 2: Use a T connector at the last corner of the border where a cable will plug into and connect to the power supply.

Step 3: Next, construct each hexagon shape into columns by connecting lighting tubes with the elbow and Y connectors to make your desired pattern.



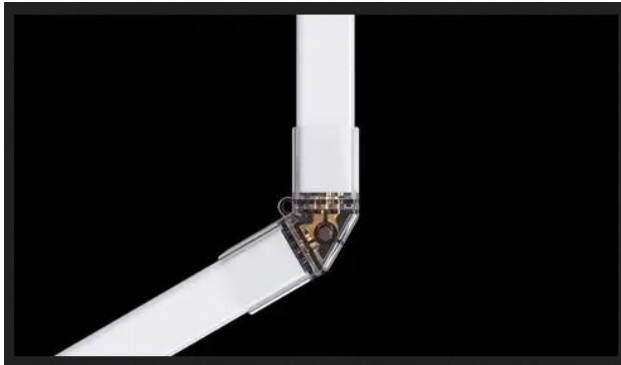
Hexagon HoneyComb Ceiling Light System

Code ATL0....



Hexagon HoneyComb Ceiling Light System

Code ATL0....



Step 4: Place open-end Y connectors outside of hexagons where the cable will plug into and connect to the power supply. The number of cables needed are dependent on the size and amount of lighting tubes (1 cable per 30 tubes). Our standard Hexagon Kits will usually need to have 2 cables connected at opposite corners.



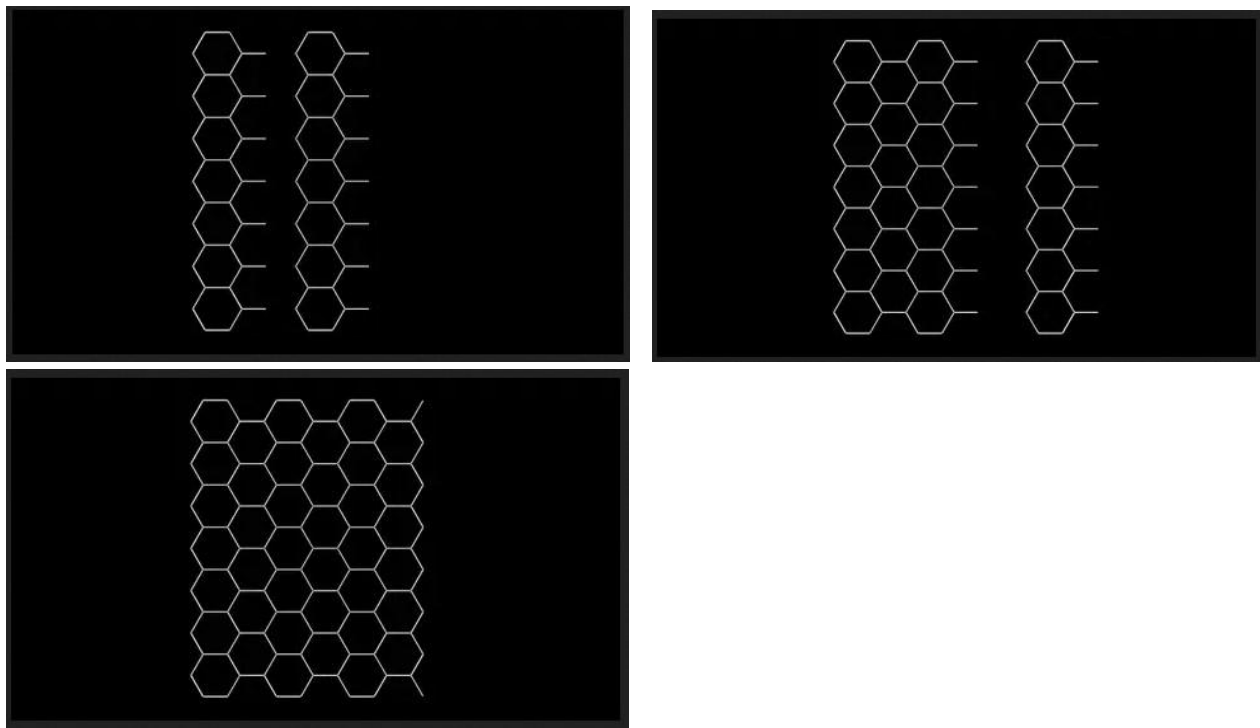
Step 5: Connect cables to the 100-240V power supply and test before final ceiling installation. Red: Live / Blue: Neutral / Yellow: Earth Ground. If you are

Hexagon HoneyComb Ceiling Light System

Code ATL0....

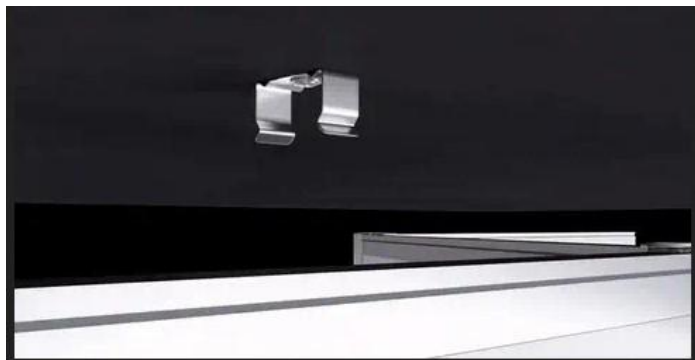
unsure of how to connect to power, we recommend consulting with an electrician before proceeding.

Step 6: Raise and install to the ceiling as a whole or in sections. Hang with screws through connector holes (preferred method), suspend with wire, or fasten with zip ties. Connect to the power supply once installed to the ceiling.



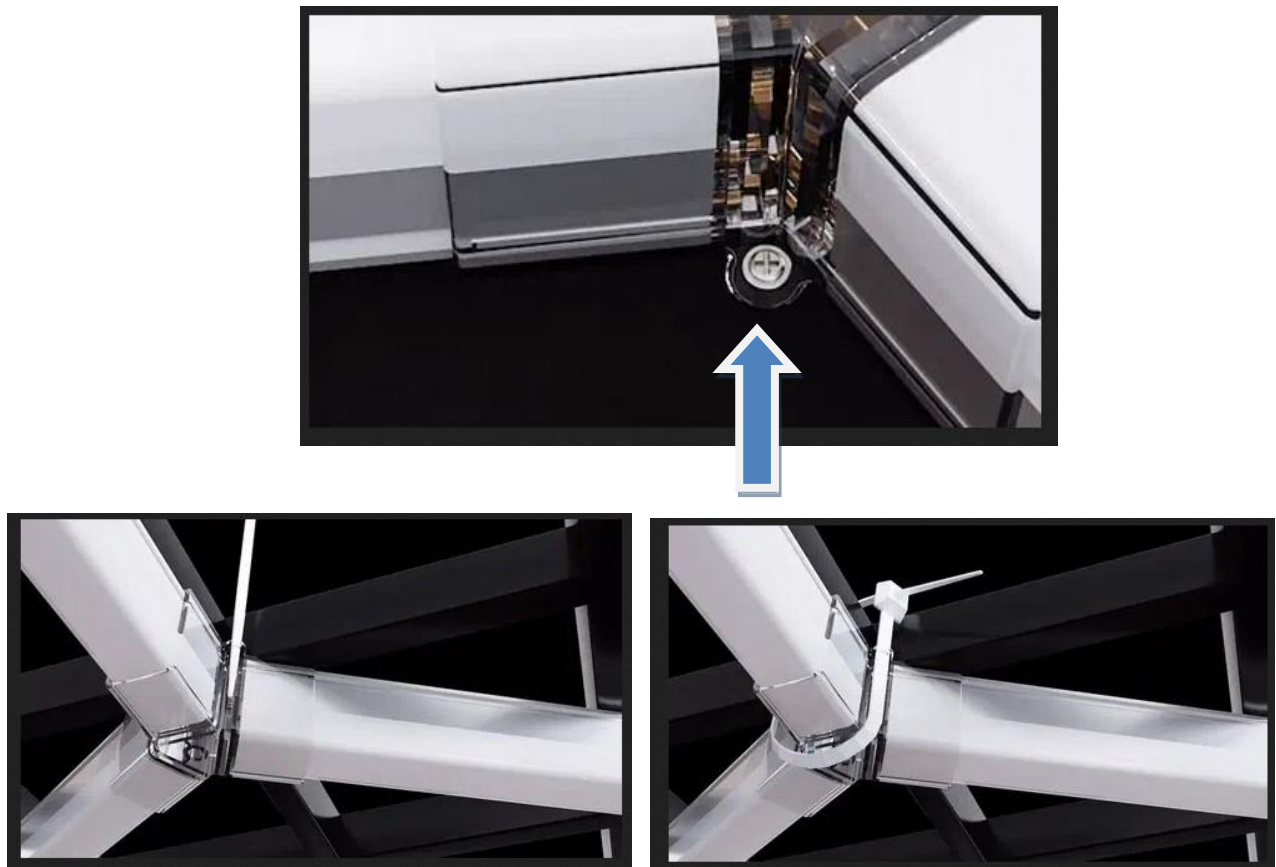
Hexagon HoneyComb Ceiling Light System

Code ATL0....



Hexagon HoneyComb Ceiling Light System

Code ATL0....



https://ueeshop.ly200-cdn.com/u_file/UPAX/UPAX503/2303/photo/32cebdd834.gif

Disclaimer: Our company is not responsible for any related problems and losses caused by improper installation and use.