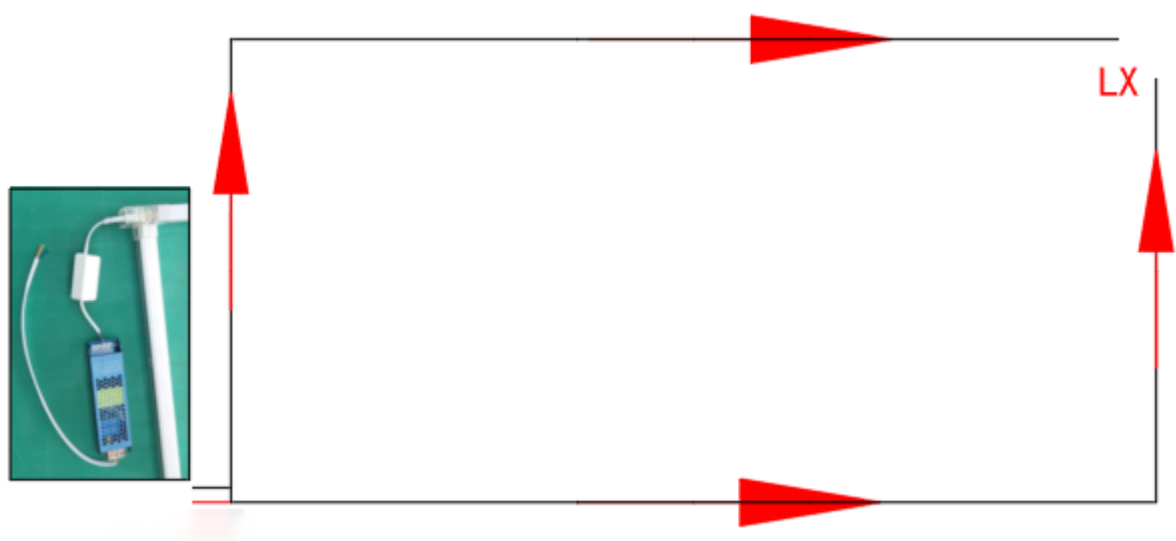
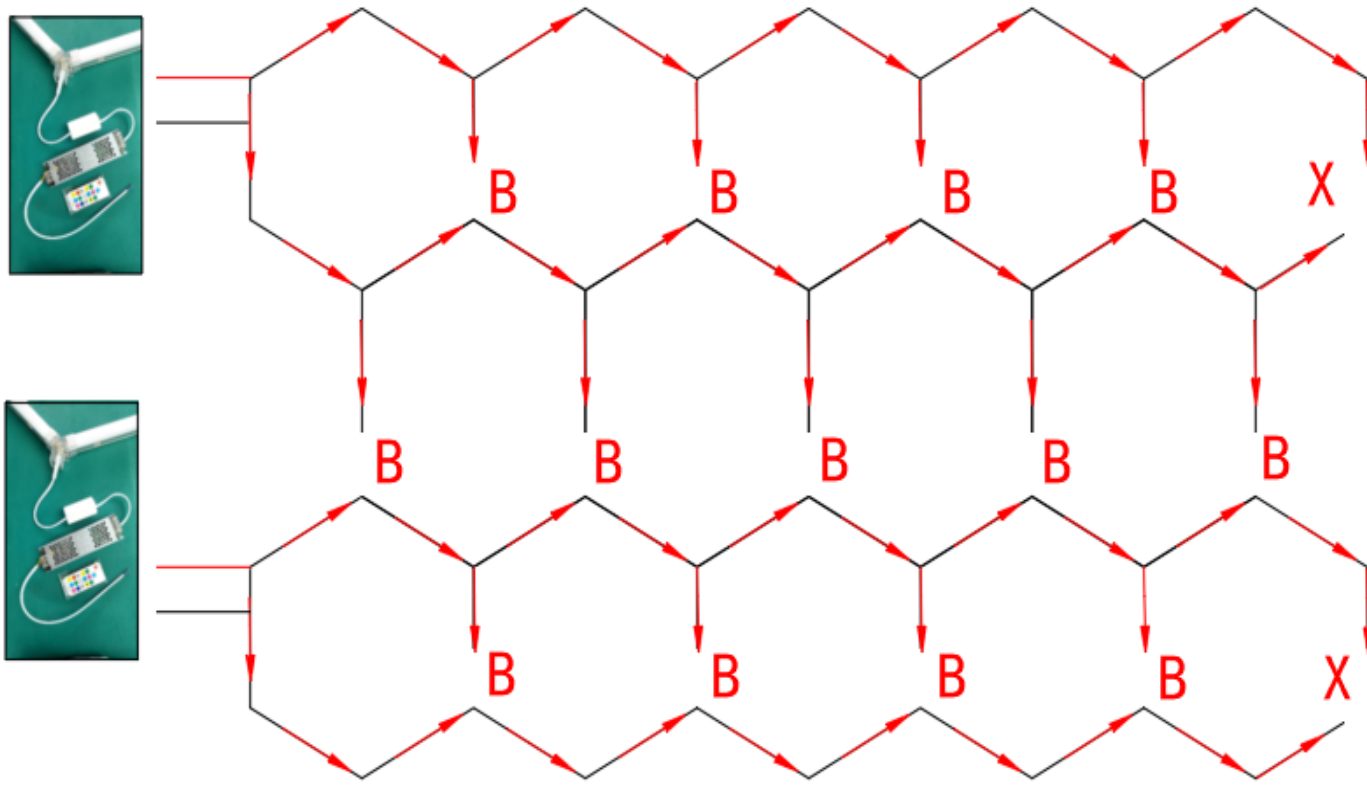


FILE NO.:			WI12-ATL42-RBG-1110		VER:		1		PAGE		1 / 1	
<h2>Hexagon LED Lighting Installation</h2>												
1.Packing List												
NO.		Name		Specifications		Quantity		Spare				
1		Light tube		length		410mm		57pcs		1pcs		
				1110mm		12pcs		1pcs				
2		Connectors		2 way		180° —		8pcs				
						90° L		2pcs				
						120° V		14pcs				
						90° No metal L		1pcs		use at “LX”		
				3 way		120° No metal V		2pcs		use at “X”		
						120° T		1pcs				
						120° Y		15pcs				
						120° 2 metal Y		13pcs		use at “B”		
2.Circuit Diagram(Please read carefully before installing, otherwise there is a risk of burning out the LED)												
Connect in series as shown in the figure,410mm,1110mm light tube with wire connect to DC24V power												
<b>Note:</b> “LX”. “X” is connected with 2 way no metal connector												
“B” is connected with 3 way 2 metal connector												
Test before fixing to the ceiling												
Document control category				D a t e				R e v i s i o n				
<input checked="" type="checkbox"/> YES / <input type="checkbox"/> NO				2024.7.2								
A p p r o v e				R e v i e w				D r a f t				

(must not be altered or photocopied without authorization)



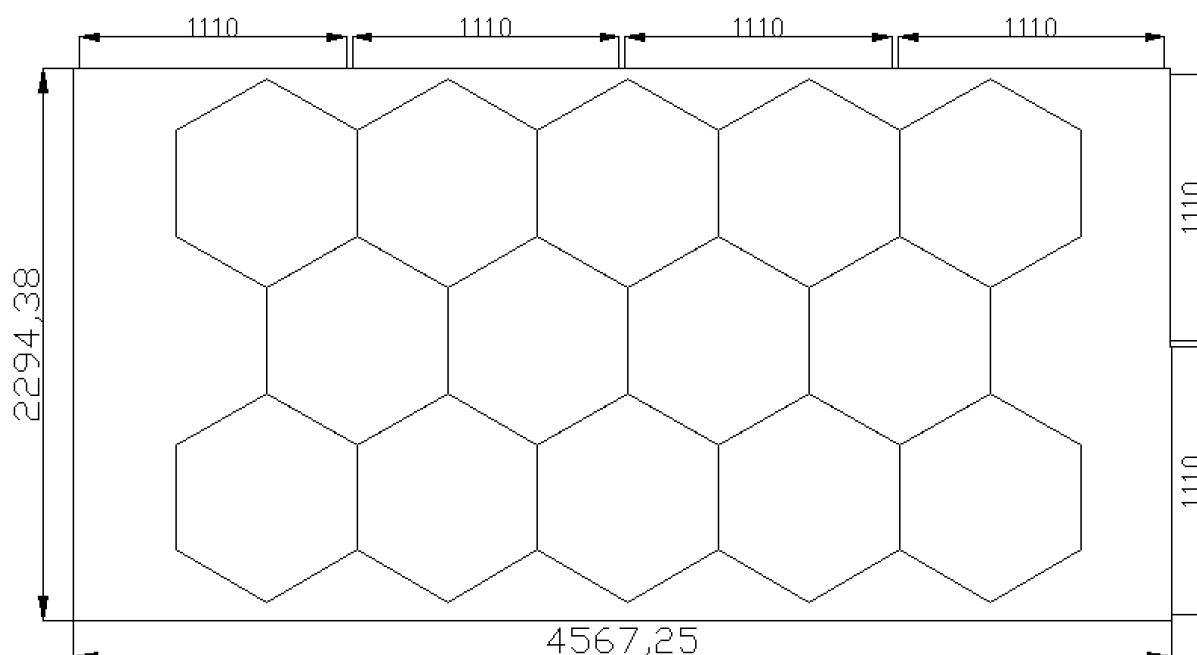
## Instructiuni instalare sursa de iluminare Hexagon LED

Produsul beneficiaza de o garantie valabila 2 ani pentru persoane fizice si 1 an pentru persoane juridice.

### 1.Continut pachet

Nr.	Bume		Specificatii	Cantitate	Rezerva
1	Tub luminos	lungime	410mm	57buc	1 buc
			1110mm	12 buc	1 buc
2	Connectori	2 cai	180° —	8 buc	
			90° L	2 buc	
			120° V	14 buc	
			90° fara metal L	1 buc	Se foloseste la conectori "LX"
			120° fara metal V	2 buc	Se foloseste la conectori "X"
		3 cai	120°T	1 buc	
			120°Y	15 buc s	
			120° 2 cu metal Y	13 buc	Se foloseste la conectori "B"

### 2. Schema de montaj a circuitului (Va rugam sa cititi cu atentie inainte de instalare, in caz contrar exista riscul arderii LED - urilor)



Se conecteaza in serie, conform diagramei, tuburile de 410mm si 1110mm cu cablul de alimentare DC24V

**Nota:** "LX" si "X" se conecteaza cu connectorul 2 cai fara metal

"B" se conecteaza cu connectorul 3 cai cu metal

**Testati ansamblul, la podea, inainte de fixare pe tavan.**

Documente	Data	V e r s i u n e
<input checked="" type="checkbox"/> D A / <input type="checkbox"/> N U	2025.3.16	
Aprobare	Review	Draft

(nu se poate modifica sau copia fara aprobare)

## Hexagon HoneyComb Ceiling Light System

Code ATL0....

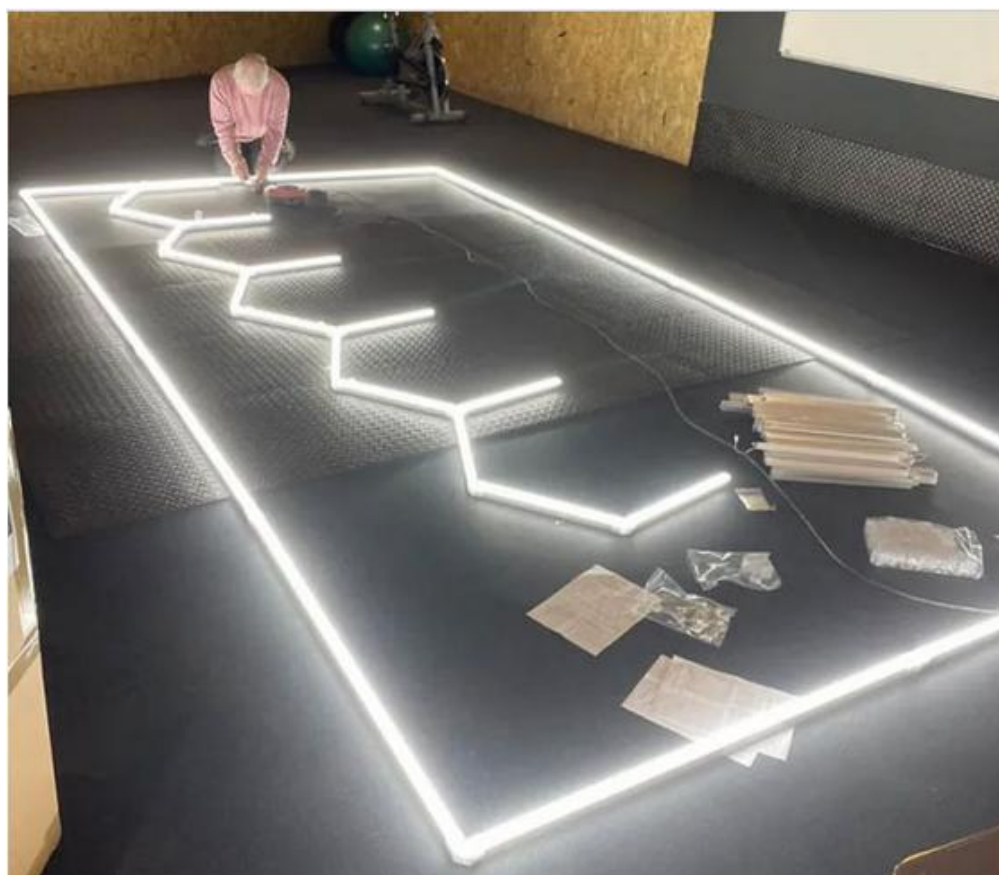
---

For Products:

[https://www.carparktuning.com/index.php?cauta=&marca=&models=&cuvchei=Hexagon+&produc=&atego=&show\\_on\\_stock=0](https://www.carparktuning.com/index.php?cauta=&marca=&models=&cuvchei=Hexagon+&produc=&atego=&show_on_stock=0)

To facilitate your installation, please read the product instruction manual carefully before installation.

**CAUTION:** You will need to remove the protective film on light tubes before installation. Please do not assemble it forcefully as it may damage the connectors or malfunction. Test lighting before final installation onto the ceiling. It is recommended to consult with an electrician to ensure your electrical setup is sufficient.



**Step 1:** The entire lighting structure should be assembled on the floor before mounting. If your kit includes a border, construct this first. If not, skip to

**Step 3:** Connect the longer lighting tubes with straight and 90-degree connectors to make the border. Make sure tubes are carefully inserted all the way into the connectors.

**Step 2:** Use a T connector at the last corner of the border where a cable will plug into and connect to the power supply.

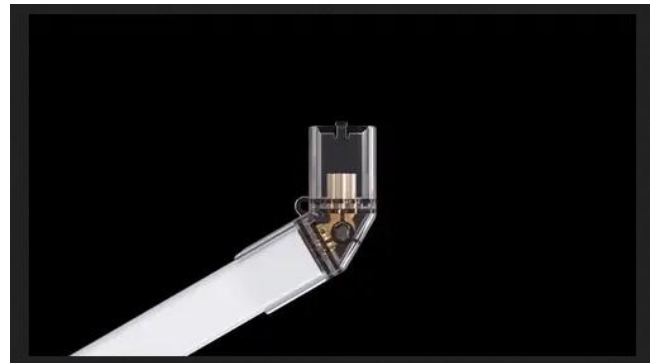
**Step 3:** Next, construct each hexagon shape into columns by connecting lighting tubes with the elbow and Y connectors to make your desired pattern.



## Hexagon HoneyComb Ceiling Light System

Code ATL0....

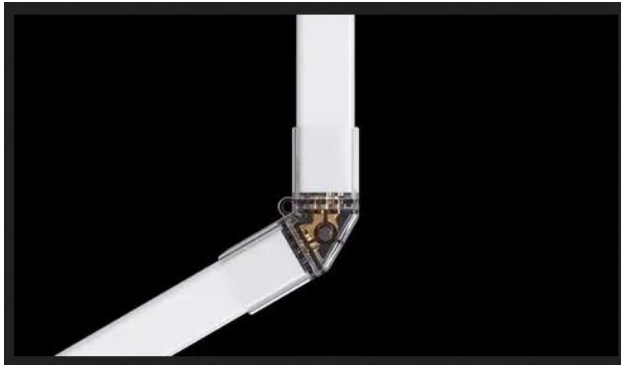
---



## Hexagon HoneyComb Ceiling Light System

Code ATL0....

---



**Step 4:** Place open-end Y connectors outside of hexagons where the cable will plug into and connect to the power supply. The number of cables needed are dependent on the size and amount of lighting tubes (1 cable per 30 tubes). Our standard Hexagon Kits will usually need to have 2 cables connected at opposite corners.



**Step 5:** Connect cables to the 100-240V power supply and test before final ceiling installation. Red: Live / Blue: Neutral / Yellow: Earth Ground. If you are

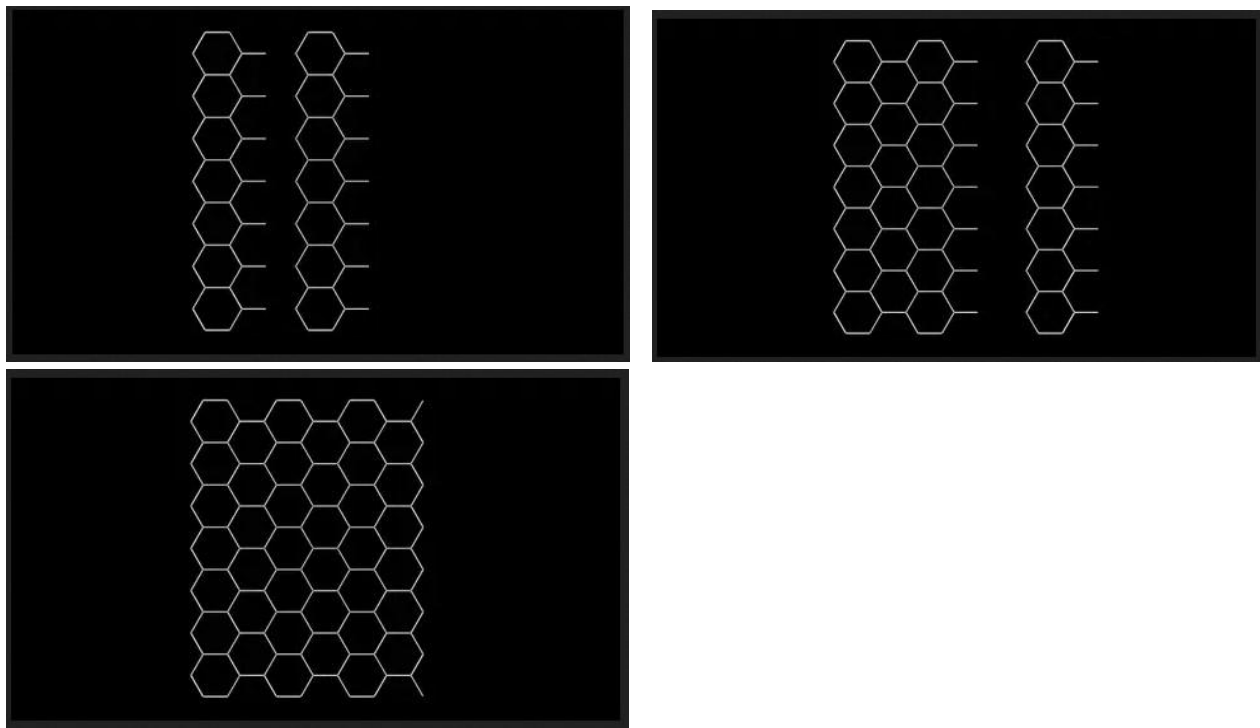
## Hexagon HoneyComb Ceiling Light System

Code ATL0....

---

unsure of how to connect to power, we recommend consulting with an electrician before proceeding.

**Step 6:** Raise and install to the ceiling as a whole or in sections. Hang with screws through connector holes (preferred method), suspend with wire, or fasten with zip ties. Connect to the power supply once installed to the ceiling.

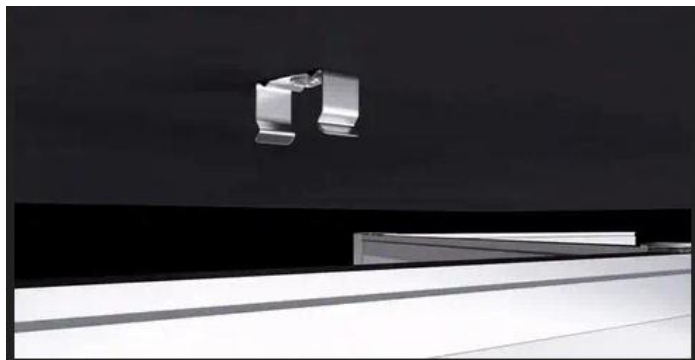




## Hexagon HoneyComb Ceiling Light System

Code ATL0....

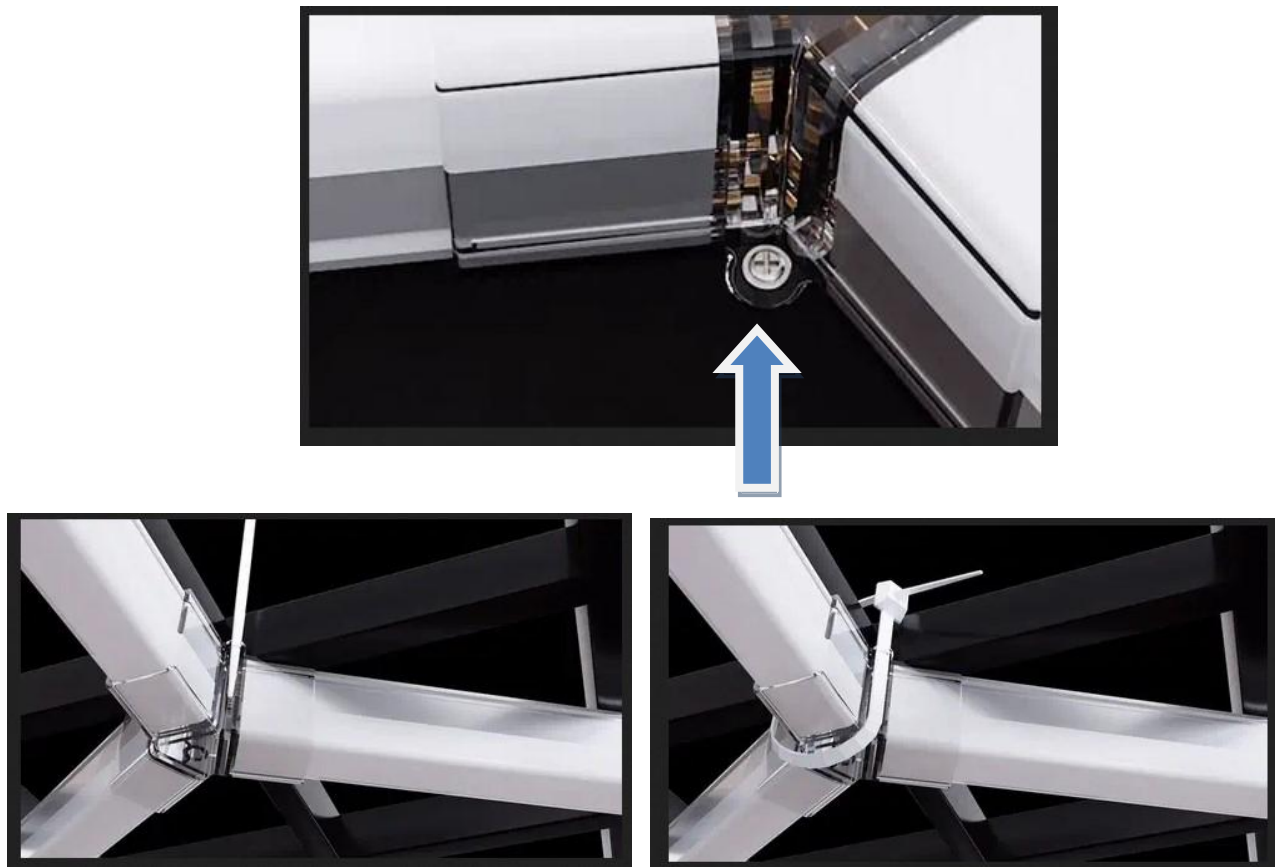
---



## Hexagon HoneyComb Ceiling Light System

Code ATL0....

---



[https://ueeshop.ly200-cdn.com/u\\_file/UPAX/UPAX503/2303/photo/32cebdd834.gif](https://ueeshop.ly200-cdn.com/u_file/UPAX/UPAX503/2303/photo/32cebdd834.gif)

Disclaimer: Our company is not responsible for any related problems and losses caused by improper installation and use.